

2025 COURSE GUIDE

**YOUR SKILLS
YOUR FUTURE**

WELCOME YUMA

Dhawura Nguna Dhawura Ngunnawal Ngunnawalwari
Dhawurawari Nginggada Dindi Yindumaralidjinyin
Dhawura Ngunnawal Yindumaralidjinyin

**This is Ngunnawal Country. We always respect
their Elders, male and female. We always respect
Ngunnawal Country.**

CIT acknowledges the cultural host nation of the ACT, the Ngunnawal people, as Canberra's first inhabitants and traditional custodians of the ACT and Region. We recognise the special relationship and connection to country the Ngunnawal people have with this area since time immemorial.

Prior to non-Indigenous arrival, Ngunnawal were a thriving community whose cultural practices were, and still are, core to their physical and spiritual wellbeing. We acknowledge

the historical dispossession of the Ngunnawal people, and recognise the long-lasting, profound and ongoing impact invasion has had on their health and wellbeing, livelihoods, cultural practices, families and continuation of laws/lore.

CIT respectfully acknowledges the significant contribution of the Ngunnawal people to the life of Canberra.

We also acknowledge other Aboriginal and Torres Strait Islander peoples that have made this place their home.

CONTENTS

ABOUT CIT	4	COURSES	24
Why CIT?	4	Aboriginal and/or Torres Strait Islander education and culture	25
Why Canberra?	6	Business, technology and management	26
Our campuses	8	Creative industries	29
Hands-on training facilities and industry partnerships	10	Construction, building and trades	32
STUDYING WITH CIT	15	Education and community	36
How to apply	15	Future energy skills	38
Pathways	16	Health and wellbeing	40
Apprenticeships and traineeships	18	Hospitality, culinary and tourism	42
Course fees	20	Science, horticulture and environment	44
Skills recognition	21		
CIT services	22	COURSE INDEX	46

An architectural rendering of the CIT Woden 2025 campus. The building is a large, modern structure with a curved facade made of vertical, multi-colored glass panels in shades of blue, green, and yellow. It has multiple levels with visible internal staircases and walkways. In the foreground, there is a paved pedestrian walkway with several people walking. To the left, there are landscaped areas with tall grasses and purple flowers. A blue bus is partially visible on the left side. The sky is blue with some white clouds.

CIT WODEN 2025

PROVIDING SKILLS OF THE FUTURE

We look forward to welcoming students to our new flagship Woden campus from Semester 2 2025.

CIT Woden will be a purpose-built contemporary, flexible, and state-of-the-art facility delivering education and training to around 6,500 students each year. As a high-tech, digitally enabled campus, it will foster an enhanced learning experience with smart classrooms, simulated learning environments and hands-on training spaces. Integrated within the community, students will have access to both internal and external common areas, open green spaces, as well as hubs designed for collaboration and innovation.

CIT Woden will provide the skills and training opportunities of the future, preparing Canberrans for tomorrow's careers.



COURSES OFFERED AT CIT WODEN

- Accounting
- Baking
- Barbering
- Beauty therapy
- Business
- Commercial cookery
- Cyber security
- English language
- Events
- Fashion design
- Foundation skills
- Graphic design
- Hairdressing
- Human resources
- Hospitality
- Information technology
- Interior design
- Legal services
- Management
- Media
- Music
- Patisserie
- Photography
- Tourism
- Visual arts



Find out more:
cit.edu.au/woden

ABOUT CIT



WHY CIT?

Join the largest vocational education and training (VET) provider in the ACT and grow your skills today to shape the future career you'll love. At CIT, you'll discover hands-on training and real-world experiences, not just theory, to get industry skills that lead to employment.



SHAPING FUTURES FOR OVER 96 YEARS

Since 1928, we have enriched the Canberra community and shaped its workforce. As the only public provider of VET in the nation's capital city, we have a strong legacy. Whether it's the barista making our morning coffee, the cyber security professionals protecting our data, the technicians servicing our electric vehicles, the nurses providing compassionate care to our loved ones, or the horticulturists maintaining our beautiful parks and gardens, Canberrans experience the skills of CIT graduates making a difference every day.



BECOME JOB-READY AND SECURE EMPLOYMENT

CIT graduates are renowned by industry for being job-ready. Our hands-on training methods, industry partnerships and placements, ensure our graduates possess the skills and confidence they need to enter the workforce straight away. In 2023, around 90 per cent of our graduates were employed or in further study, nearly 5 per cent above the national average.



RECEIVE NATIONALLY RECOGNISED QUALIFICATIONS

We offer nationally recognised qualifications, allowing you to take your qualifications anywhere across Australia when you complete your course.



LEARN FROM AWARD-WINNING INSTITUTE AND TEACHERS

We take pride in being the ACT's Large Registered Training Organisation (RTO) of the Year for the past ten years. Our highly skilled teachers possess current industry knowledge, experience and connections. Many of our educators have received industry awards and accolades.



ACCESS WORLD-CLASS FACILITIES ACROSS FIVE CAMPUSES

Our state-of-the-art facilities provide training in real-world environments, preparing you for a seamless transition into the workforce.



TRAIN WITH CANBERRA'S BEST

We are home to the 2023 Australian Aboriginal and Torres Strait Islander Student of the Year, the 2023 ACT VET Teacher of the Year and the 2023 ACT Australian School-based Apprentice of the Year.



JOIN A DIVERSE AND INCLUSIVE COMMUNITY

With over 18,000 students in 2023, including international students from 62 countries, our vibrant, welcoming and inclusive campus culture will enable you to develop friendships with students from Australia and around the world.

“

The thing I have enjoyed most about CIT is probably the community. Everyone's friendly and happy to help out. The teachers have been amazing! They have all given me so much help and advice.

Zoe, CIT Cabinet Making student

”



WHY CANBERRA?

People from all over the world are attracted to live, study and work in Canberra, and it's not hard to understand why. Canberra is Australia's innovation capital and one of the world's most liveable cities, with the fastest economic growth in the country.

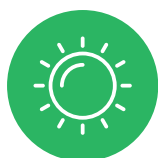


STUDY IN ONE OF THE WORLD'S MOST LIVEABLE CITIES



Live in the second-best city in the world

for quality of life, the third healthiest city in the world and one of the world's most sustainable cities.



Enjoy 246 average days of sunshine

through hot summers and cold winters.



Be part of a knowledge-based economy

in the fourth most innovative city in the world.



Train in the most educated city

in Australia, with the country's most highly educated workforce.



Discover how easy it is to get around,

with less congestion than many other cities and a reliable public transport network.



Feel welcome in an international city

with over 100 embassies and consulates.



Get ahead

in a city with the highest average full-time salary in Australia.



Benefit from a lower cost of living

than many other major Australian cities.



Access study pathways

to renowned Australian universities, located right here in Canberra.

OUR CAMPUSES



CIT FYSHWICK

81 Mildura Street

In the industrial hub of Canberra, offering easy access to the industries that play a vital role in our on-campus training. Here you will find state-of-the-art trade training facilities to support studies in electric vehicle (EV) technology, electrotechnology, plumbing, automotive and metals.

CIT TUGGERANONG

205 Anketell Street

Conveniently situated in the heart of the Tuggeranong town centre, close to local schools, shopping, entertainment, sporting venues and public transport facilities. CIT Tuggeranong offers students access to contemporary computer laboratories, library facilities, a mock court for practical learning experiences, flexible learning spaces and a variety of support services.

CIT WODEN – OPENING IN 2025

Between Bradley Street
and Callam Street

Situated within the Woden Town Centre and in proximity to the growing Woden business district, offering access to local shopping, the new light rail ready transport interchange and revitalised green public spaces.

We have five campuses across Canberra, each situated in beautiful leafy surroundings and conveniently located on major public transport routes.

Our campuses are designed to foster a supportive learning environment, where students, teachers and industry work collaboratively alongside each other.



CIT REID

CIT REID

37 Constitution Avenue

Within walking distance of Canberra City and nearby government departments in Campbell and Russell.

CIT courses delivered from Reid will move to the new CIT Woden campus from Semester 2 2025. We will support incoming and current students in this transition.

CIT BRUCE

35 Vowels Crescent

Set amidst peaceful native bushland in the northern suburbs of Canberra, near the University of Canberra and the nation's premier sporting centre, the Australian Institute of Sport (AIS), is CIT's award-winning Sustainability Hub. Major shopping centres, public transport hubs, entertainment venues and cafes are just a stone's throw away.

CIT GUNG AHLIN

25 Gozzard Street

Centrally situated in Canberra's rapidly expanding northern suburbs, this CIT campus is co-located with Gungahlin College and the Gungahlin Public Library. With the local shopping precinct and public transport hubs nearby, students have easy access to a range of amenities and services. This campus offers flexible learning spaces and a range of student support services.

HANDS-ON TRAINING FACILITIES AND INDUSTRY PARTNERSHIPS

Our training facilities provide hands-on experience using the latest technology and industry-specific approaches to prepare you for the workplace.

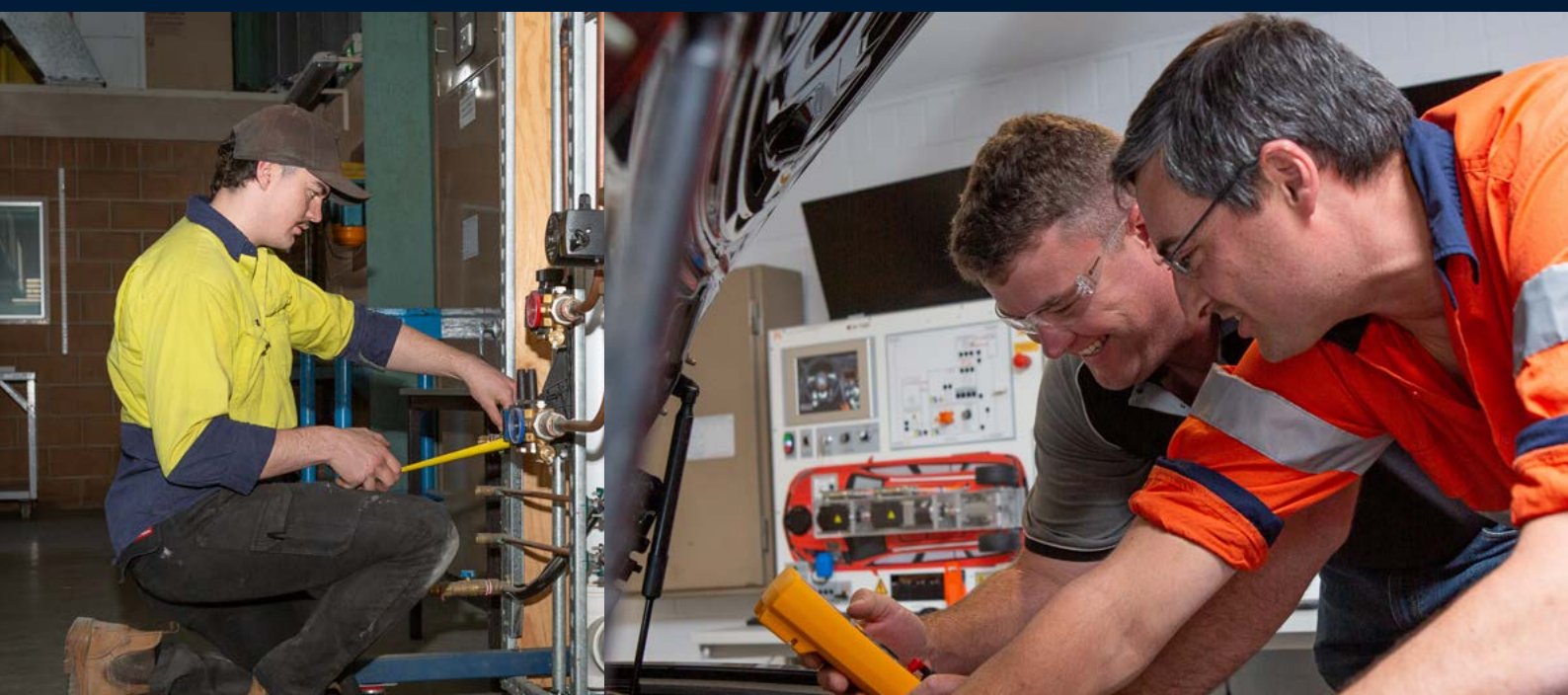
Our students have access to world-class facilities, such as commercial kitchens, a restaurant and café, childcare, hair and beauty salons, a fitness centre, simulated hospital wards, a cyber security operations centre, trade workshops and more.

We also partner with industry to deliver high-quality, accessible and future-focused training.

Our industry partnerships will expose you to the latest industry techniques and provide practical experience during your studies. The professional networks you build with industry during your training may also offer future employment opportunities.

CIT FYSHWICK

- Automotive refinishing
- Electric vehicle (EV) lab
- Electronics training facility
- Heavy and light vehicles workshop
- Makerspaces and light manufacturing hubs
- Metal fabrication training facility
- Plumbing workshop
- Air conditioning and refrigeration training facility
- Trades training facilities



CIT REID

- Cafe and restaurant*
- Culinary and bakery kitchens*
- Cyber training security operations centre*
- Fashion workshop*
- Hair and beauty salons*
- ICT networking and hardware laboratories*
- Industry incubator spaces*
- Interior and graphic design studios*
- Makerspaces and light manufacturing hubs*
- Music studio*
- Photography studios*
- Screen and media facility*
- Visual art studio*



*From Semester 2 2025, the location of this facility will move from CIT Reid to the new CIT Woden campus. CIT will provide support for students who will be making the move to Woden. Find out more: cit.edu.au/woden



CIT BRUCE

- Carpentry and cabinet making workshops
- Dog day care centre
- Early childhood education centre
- Fitness centre and gym
- Forensic lab
- Greenhouses and a plant nursery
- High risk training facilities
- Global Wind Organisation (GWO) facility
- Laboratories
- Plastering, glass, painting and tiling workshops
- Simulated aged care and allied health facilities
- Simulated dental clinic
- Simulated hospital wards
- Simulated veterinary clinic
- Trades training facilities





“

This course has given us quite extensive and good training to prepare us for the job. It explains everything very clearly and makes it very easy to learn new skills.

Chris – Global Wind Organisation
(Basic Safety Training) student

”

SAFETY FOCUS ON RENEWABLES TRAINING

CIT is one of only a handful of organisations across Australia delivering the Global Wind Organisation’s Basic Safety Training (BST), which is becoming industry standard for trades pursuing careers in the wind turbine industry. Delivered at our purpose-built high risk training facilities at CIT Bruce, the facility includes a working at heights tower, a ladder rescue area with mannequin, and a simulated wind turbine cell room that can be darkened and filled with smoke to replicate potential hazards.

WOMEN IN CONSTRUCTION PROGRAM

CIT was proud to be one of Lendlease's industry partners delivering the Lendlease Women in Construction Program. The program, funded through an ACT Government Skilled to Succeed innovation grant, provided 15 women and gender-diverse people an opportunity to gain practical knowledge about the construction industry, as well as the necessary skills, personal protective equipment, tickets and licenses, to support industry entry.

“

**I've got two girls,
and I really want them to see
that women can do anything.
You don't really need to
rely on anybody. You can
do it yourself.**

Abby, Lendlease Women in
Construction participant

”



STUDYING WITH CIT

HOW TO APPLY

1 CHOOSE YOUR COURSE

Explore our range of qualifications, from short courses to advanced diplomas, and apprenticeships and traineeships.



2 PREPARE TO STUDY

Before you start at CIT, check you have everything you need to complete your enrolment, including a Unique Student Identifier (USI). Our website provides an overview of all the information you may require before you apply for a course at CIT.



3 APPLY FOR YOUR COURSE

Once you have selected your preferred course, you can apply online in four easy steps:

1. Go to the course page for the course you want to apply for.
2. Select APPLY NOW, then choose your Application Method. You will be directed to the CIT Self Service portal.
3. To login to CIT Self Service as a first-time student, create a Login ID and PIN and follow the prompts.
4. Once you have logged in to CIT Self Service, follow the prompts to complete and submit your application.

If you are on an eligible temporary visa, you will need to contact CIT Student Services to be admitted to the course you are interested in. To apply for an apprenticeship or traineeship, see **page 18**. To apply as an international student, see **page 23**.



4 ENROL IN YOUR SUBJECTS

Most CIT courses automatically accept students once an application has been completed. You then need to enrol in your selected subjects. You can enrol online or attend an enrolment session.



Find out more:
cit.edu.au/enrol

PATHWAYS

PATHWAYS TO CIT

We offer pathways into CIT through:

- ACT Senior Secondary Certificate (post-school option)
- Senior Secondary E Courses
- Foundation skills courses
- English language courses

PATHWAYS TO UNIVERSITY

Canberra is Australia's education capital, home to highly-ranked universities and educational institutions.

We have credit transfer arrangements with numerous universities, enabling you to receive one to two years of credit towards certain degrees.

Because we offer nationally recognised qualifications accredited by the Australian Skills Quality Authority (ASQA), our students can apply for Recognition of Prior Learning (RPL) to most Australian universities and receive credit towards a degree, even where formal credit transfer arrangements are not in place.

A PATHWAY FROM CIT TO UNIVERSITY CAN HELP TO...



MEET ENTRY REQUIREMENTS

No ATAR? No problem. While most CIT courses have minimum requirements for previous education, age and/or experience, you don't need an ATAR to study at CIT.



SAVE TIME

Some CIT qualifications can be used as credit towards a university degree, potentially reducing the total time needed to complete your degree by as much as one to two years.



REDUCE COSTS

Our tuition fees are generally lower than university tuition fees for comparable subjects, allowing you to reduce the total cost of your studies.



EARN WHILE YOU LEARN

The foundational industry skills and experience you gain at CIT can provide you with the opportunity to work in the industry, while studying at university, so you can earn while you learn.



TRANSITION SMOOTHLY

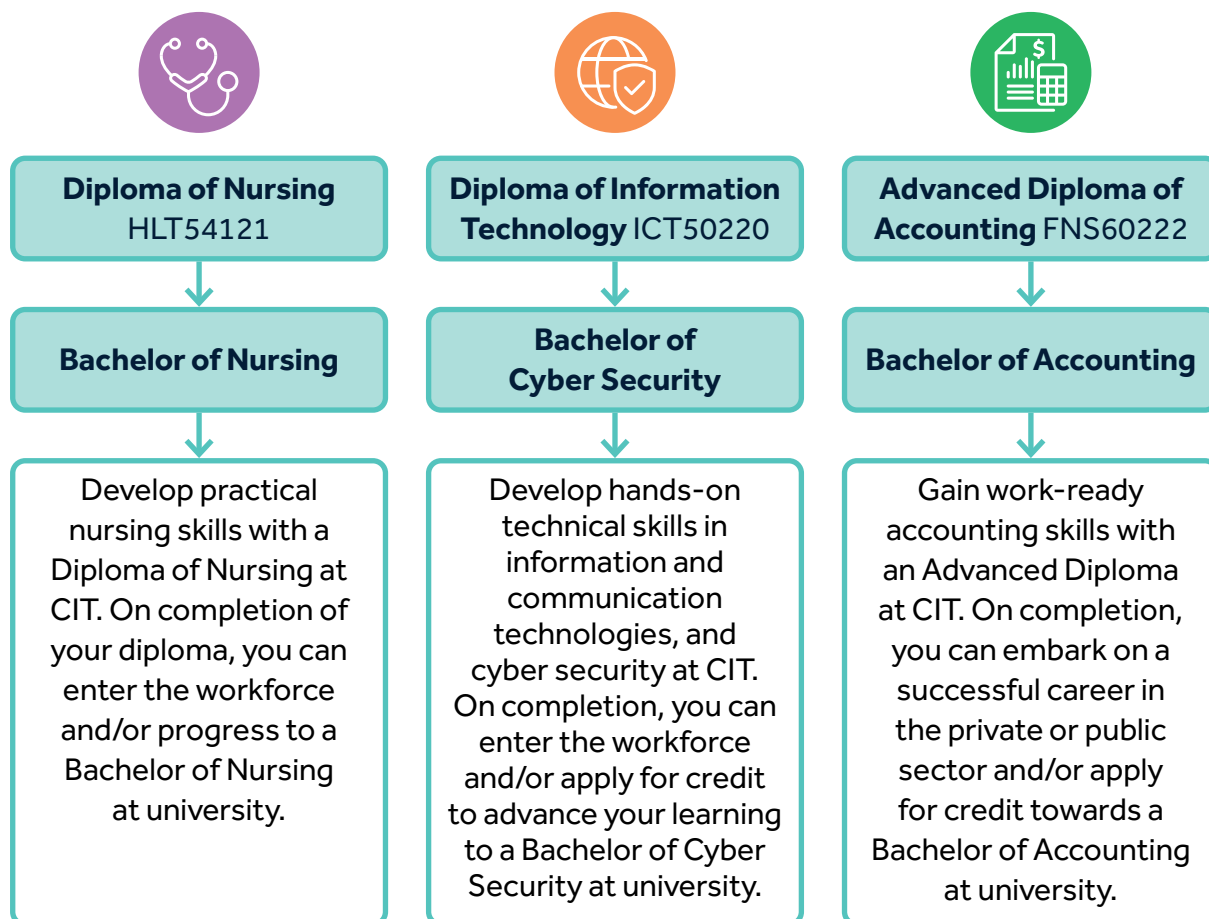
By using your CIT qualification as a pathway to a degree, you can be better prepared for university studies with existing knowledge and experience in the field.



GAIN REAL-WORLD INSIGHT

Our courses are generally shorter than a degree. By starting your studies at CIT, you can test out a subject area to see if you like it before you commit the time and cost to a full degree.

PATHWAY EXAMPLES



“

CIT gives you a pathway, as it opens a horizon of opportunities for you. You get all the clinical experience that you need from placements, with the state-of-the-art technology that we have access to, as well as the teachers always pushing you to be the best version of yourself, introducing you to new ideas and opportunities that could go on after you have graduated from CIT.

Rahil, CIT Nursing student

”



APPRENTICESHIPS AND TRAINEESHIPS

Earn while you learn and gain practical skills on the job as you train in your qualification through an apprenticeship or traineeship.

APPRENTICESHIPS, TRAINEESHIPS AND SCHOOL-BASED APPRENTICESHIPS

An apprentice or trainee is employed in the industry, with their employer supporting them to apply and develop technical skills through learning at CIT.

This combination of technical skills, with real-world experience, is extremely valuable for someone starting out in the workforce. This provides apprentices and trainees with a well-rounded personal development opportunity and industry-specific workforce training to meet their needs.

A school-based apprenticeship is a great way for secondary students, aged 15 or over, to start an apprenticeship while they are still at school. This option allows you to continue your secondary studies, spend part of your week working with an employer and some of your school time studying at CIT.

STUDY OPTIONS AS AN APPRENTICE OR TRAINEE

- An **apprenticeship** generally covers traditional trades, like carpentry, automotive (including electric vehicles), plumbing, hairdressing, beauty therapy, electrical and many more. An apprenticeship generally takes 3–4 years to complete.
- A **traineeship** focuses on other sectors, like health and community care, business and information technology (including cyber security). A traineeship generally takes 1–2 years to complete.
- A **school-based apprenticeship** can be either an apprentice or a trainee in a variety of sectors, such as culinary, early childhood education and metal fabrication. Most school-based apprentices and trainees will continue their apprenticeship or traineeship when they finish school.

You can identify the CIT courses available to study as an apprenticeship, traineeship or a school-based apprenticeship by the application type AA in this course guide.

“
I’m studying carpentry
and I love the satisfaction
I get from it. I’ve gained
the confidence to solve
problems that arise on site.

Nakita, CIT Carpentry apprentice

”



HOW TO BECOME AN APPRENTICE OR TRAINEE AT CIT

1 FIND YOUR EMPLOYER

Find an employer who's willing to take you on as an apprentice or trainee. If you're not sure where to start, contact an Apprenticeship Connect Australia Provider.

If you are a secondary school student seeking to start a school-based apprenticeship, start by speaking to your school career advisor.



2 SELECT YOUR QUALIFICATION, SELECT CIT AS YOUR RTO/TRAINING PROVIDER AND SIGN INTO YOUR TRAINING CONTRACT

Once an employer has agreed to take you on, you and your employer should contact CIT to discuss your training needs and choose a suitable qualification.

You should meet with an Apprenticeship Connect Australia Provider to sign your Australian Apprenticeship Training Contract within 28 days of starting employment.



3 ENROL IN YOUR QUALIFICATION AND START TRAINING AT CIT

You need an approved Australian Apprenticeship Training Contract before you can enrol at CIT. Once you have this, you can meet with CIT to develop your training plan and enrol in your qualification. Classes generally commence in February and July every year, but this will be confirmed at enrolment.



Find out more:
cit.edu.au/apprentice

COURSE FEES

FEES

Each course listed on our website has an indicative cost based on core subjects, electives, duration and application type. Course fees can include tuition fees, as well as resources and other materials costs. Tuition fees vary depending on the course duration and whether they are government subsidised. Some courses have capped places and only a certain number of people can access the applicable government subsidy. Student fees often change because these subsidies change. This means course fees may vary year-to-year.

FINANCIAL ASSISTANCE

A range of financial support options are available to assist you in your studies, including:

- fee-free qualifications and short courses¹
- concessions and financial assistance
- scholarships
- payment plans and fee payment options
- VET Student Loans or FEE-HELP (a loan from the Federal Government that must be repaid)
- trade support loans.

You may also be eligible for tax deductions for course fees and associated study expenses.



Find out more:
cit.edu.au/fees

¹ Fee-Free TAFE is a jointly funded initiative of the Commonwealth, state and territory governments. Eligibility criteria apply, approved students will need to pay for any learning resources such as textbooks or other equipment required for the course.



“

It's awesome seeing other girls doing what I'm doing. I think it's really important for a lot more women to get involved because it brings a new frame of mind to the trade. This scholarship has helped me to purchase tools that I wasn't able to get previously.

Rachel – Brighte Pathways:
Women in Energy Scholarship recipient

”

SKILLS RECOGNITION

Skills recognition acknowledges the skills you have learned from your work, life experiences or previous formal study.

RECOGNISING YOUR WORK AND LIFE EXPERIENCE

As you travel through life, you gain skills and knowledge that can be formally recognised against a qualification. You can gather experience if you:

- are currently working
- have worked in the past
- are raising a family
- are participating in social, recreational or educational activities
- are involved in a hobby or are volunteering in your community.

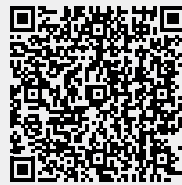
RECOGNISING YOUR PREVIOUS FORMAL STUDY

We recognise subjects or competencies you have successfully obtained through other accredited vocational educational institutions.

BENEFITS OF SKILLS RECOGNITION

Skills recognition means you don't have to study things you already know. It makes study more enticing, enjoyable and relevant, and less time-consuming.

Fees may apply. If fees are charged, they are usually charged at the same rate as the subject fee.



Find out more:
cit.edu.au/recognition



CIT SERVICES

We're here to help you succeed. We provide services, support and resources across all campuses to assist you before, during and after your CIT studies.



(02) 6207 3188



infoline@cit.edu.au



cit.edu.au/studentservices



cit.edu.au/livechat

STUDENT SERVICES, SUPPORT AND ADVICE

At every campus, our friendly staff are here to assist you all your administrative needs throughout your study journey. Whether you're a current, future, or past student, we provide support for applications, enrolments, skills recognition, course information, awards, fees and general enquiries. We also offer guidance on fee assistance and scholarships, and can connect you to other essential support services, including:

- apprentice support
- careers advice
- migrant/refugee support
- student equity
- study support
- counseling
- disability support
- fee assistance
- LGBTIQA+ support
- youth support.



Find out more:
cit.edu.au/current

ABORIGINAL AND/OR TORRES STRAIT ISLANDER SUPPORT

CIT Yurauna, our Centre of Educational Excellence for Aboriginal and/or Torres Strait Islander students, offers specialised support to enhance your knowledge, abilities and confidence. Students have access to:

- CIT Yurauna Indigenous Scholarships for financial assistance
- free childcare for Aboriginal and/or Torres Strait Islander children from birth to five years old.

Find out more:
cit.edu.au/yurauna





YOUR STUDY EXPERIENCE

Enhance your study experience with our comprehensive library services and online learning platform, eLearn.

CIT Library services:

- access to resources and study spaces
- workshops
- PCs and software
- a 24-hour study area at CIT Reid.

Our knowledgeable library staff are always ready to assist you with all your study needs.

Find out more:

cit.edu.au/library

As a CIT student, you will use eLearn to:

- access course materials
- interact with teachers and fellow students
- submit assignments
- receive grades
- monitor your study progress.

If you need help to navigate eLearn, our support helpdesk is here to guide you and provide technical support.

Find out more:

elearn.cit.edu.au

STUDENT ASSOCIATION

The CIT Student Association (CITSA) is dedicated to enriching your student experience by offering:

- job search advice
- accommodation assistance
- fee payment options
- peer tutoring
- social events and trips.

CITSA also manages Fresh-to-go, Café Yala and the CITSA Bookshop to meet your needs on campus.

Find out more:

citsa.com.au

INTERNATIONAL STUDENTS

CIT provides comprehensive support for international students, including advice and assistance with:

- finance
- accommodation
- visas and immigration
- health cover
- pastoral care
- stress management and adjusting to a new lifestyle.


Find out more:

international.cit.edu.au



COURSES

From apprenticeships and certificate-level training, to advanced diplomas and graduate certificates, we offer a range of study options to suit your lifestyle, experience and career stage.



ABORIGINAL AND/OR TORRES STRAIT ISLANDER EDUCATION AND CULTURE



CIT Yurauna, our Aboriginal and/or Torres Strait Islander Educational Centre of Excellence, offers tailored courses, student support and cultural advice, in a welcoming and supportive environment, to help foster your future education. Courses are designed for Aboriginal and/or Torres Strait Islander people who aspire to enter, or are working in, community services or development. Delivered by qualified and experienced Aboriginal and Torres Strait Islander educators, within a community setting using culturally relevant techniques like yarning circles, these courses empower students to share ideas, learn from others and enhance existing skills in a supportive environment. General Education for Adults is also available to improve literacy, numeracy, digital (computing) and learning skills. Our interactive classrooms bring the outside environment inside the classroom in a safe, respectful, inclusive and culturally sensitive environment.

Courses	Delivery	Duration	Location	AA
Certificate IV in Alcohol and Other Drugs CHC43215	FT/PT	1 year	Reid	Yes
Certificate III in Community Services CHC32015	FT/PT	6 months	Reid	Yes
Certificate II in Aboriginal and/or Torres Strait Islander Cultural Arts CUA20420	PT	6 months	Reid	
Certificate II in General Education for Adults 22473VIC	FT/PT	6 months	Reid	
Statement of Attainment Road Ready	PT	3 days	Reid	

FT: Full-time **PT:** Part-time **FL:** Flexible Learning **ON:** Online **AA:** Apprenticeship, Traineeship or School-based Apprenticeship

Course details correct at time of publication. Location may change. For the most up-to-date information about courses, including approximate fees, please visit cit.edu.au

BUSINESS, TECHNOLOGY AND MANAGEMENT

Dive into the world of business, project management, cyber security, or information technology (IT) and gain in-demand professional skills with a nationally recognised qualification. Combining theory and practice, you'll learn practical business and administrative skills in an immersive, simulated business environment. Our business and IT courses are available part-time, allowing you to balance study with your personal and professional commitments. Whether you are starting your career or advancing your skill set, we offer a range of management and leadership courses to help you develop the transferable skills and knowledge needed to effectively execute project requirements in any industry sector.

ACCOUNTING AND BOOKKEEPING

Courses	Delivery	Duration	Location	AA
Advanced Diploma of Accounting FNS60222	FT/PT/FL	6 months	Bruce Gungahlin Reid* Tuggeranong	
Diploma of Accounting FNS50222	FT/PT/FL	6 months	Bruce Gungahlin Reid* Tuggeranong	
Certificate IV in Accounting and Bookkeeping FNS40222	FT/PT/FL	6 months	Bruce Gungahlin Reid* Tuggeranong	Yes
Certificate III in Accounts Administration FNS30322	FT/PT/FL	6 months	Bruce Gungahlin Reid* Tuggeranong	Yes
Statement of Attainment Accounting Fundamentals	PT/FL	6 months	Bruce Gungahlin Reid* Tuggeranong	
Statement of Attainment Accounting Principles Skill Set FNSSS00014	FT/PT/FL	6 months	Bruce Gungahlin Reid* Tuggeranong	
Statement of Attainment BAS Agent Registration Skill Set FNSSS00004	PT/FL	6 months	Bruce Gungahlin Reid* Tuggeranong	
Statement of Attainment Commercial Law for Tax Agents Skill Set FNSSS00005	PT	6 months	Bruce	
Statement of Attainment Tax Law for Tax Agents Skill Set (Tax documentation) FNSSS00008	PT/FL	6 months	Bruce Gungahlin Reid* Tuggeranong	



BUSINESS

Courses	Delivery	Duration	Location	AA
Certificate IV in Business BSB40120	FT/PT/FL	6 months	Bruce Gungahlin Reid* Tuggeranong	Yes
Certificate III in Business BSB30120	FT/PT/OL/FL	6 months	Bruce Gungahlin Reid* Tuggeranong	Yes
Certificate II in Workplace Skills BSB20120	FT/PT/FL	15 weeks	Bruce Gungahlin Reid* Tuggeranong	Yes

CYBER SECURITY

Courses	Delivery	Duration	Location	AA
Graduate Certificate in Networking and Cyber Security 10907NAT	FT/PT	6 months	Reid*	
Certificate IV in Cyber Security 22603VIC	FT/PT/ON	1 year	Reid*	Yes
Statement of Attainment Introduction to Cyber Security Awareness	ON/FL	6 weeks	Reid*	
Statement of Attainment Introduction to Organisational Cyber Security	PT/ON	6 weeks	Reid*	
Statement of Attainment Cyber Security Threat Assessment and Risk Management Skill Set BSBSS00093	PT	2 weeks	Reid*	
Statement of Attainment Cyber Security Awareness Skill Set BSBSS00094	PT	17 weeks	Reid*	
Non-Accredited Training Essential Eight Training	PT	3 days	Reid*	

INFORMATION TECHNOLOGY

Courses	Delivery	Duration	Location	AA
Diploma of Information Technology ICT50220	FT/PT	1 year	Reid*	Yes
Certificate IV in Information Technology ICT40120	FT/PT/ON	1 year	Reid*	Yes
Certificate III in Information Technology ICT30120	FT/PT	6 months	Reid*	Yes
Statement of Attainment Networking and Web Development	PT	6 months	Gungahlin	
Statement of Attainment Networking and Computer Hardware	PT	6 months	Tuggeranong	

LEGAL

Courses	Delivery	Duration	Location	AA
Diploma of Paralegal Services BSB50720	FT/PT/ON/FL	2 years	Online	
Certificate IV in Legal Services BSB40620	FT/PT/ON/FL	6 months	Online	Yes
Non-Accredited Training Justice of the Peace – ACT	PT	2 days	Reid*	

MANAGEMENT AND HUMAN RESOURCES

Courses	Delivery	Duration	Location	AA
Diploma of Leadership and Management BSB50420	FT/PT/ON	6 months	Reid*	Yes
Certificate IV in Leadership and Management BSB40520	FT/PT/FL	6 months	Bruce Gungahlin Reid*	Yes
Statement of Attainment Human Resources Essentials	PT	17 weeks	Reid*	

PROJECT MANAGEMENT

Courses	Delivery	Duration	Location	AA
Diploma of Project Management BSB50820	FT/PT/ON	2 years	Online	Yes
Certificate IV Project Management Practice BSB40920	FT/PT/FL	1 year	Online	Yes
Statement of Attainment Introduction to Project Management Practice	PT	3 months	Online	

*From **Semester 2 2025**, the location of this course will transition from CIT Reid to the new CIT Woden campus. CIT will provide support for students who will be making the move to Woden. Find out more: cit.edu.au/woden

FT: Full-time **PT:** Part-time **FL:** Flexible Learning **ON:** Online **AA:** Apprenticeship, Traineeship or School-based Apprenticeship

Course details correct at time of publication. Location may change. For the most up-to-date information about courses, including approximate fees, please visit cit.edu.au

CREATIVE INDUSTRIES



Embrace your inner creativity as you pursue your passion and prepare for a career in some of the world's most dynamic and diverse industries. Our courses offer a perfect blend of theoretical knowledge and hands-on practical experience to equip you with job-ready skills to make an impact in your chosen field. Delivered by inspiring and highly experienced teachers with real-world experience and industry insights, you will learn the latest trends and techniques necessary to enter the industry.

From professional studios for photography, music, media, graphics and interior design fitted with the latest digital equipment, to specialist placement areas such as hair and beauty salons, visual art studios, fashion production workshops and partnerships with the Canberra Theatre Centre, you will have access to world-class facilities that simulate real-world environments, allowing you to gain industry experience. Whether your passion lies in hairdressing, fashion, floristry, photography or makeup, our courses are designed to foster your creativity and provide you with the expertise needed to excel in your chosen field.

BARBERING

Courses	Delivery	Duration	Location	AA
Certificate III in Barbering SHB30516	FT/PT	1 year or 2-2.5-year apprenticeship	Reid*	Yes
Statement of Attainment Advanced Barbering [extract from SHB30516]	PT	7 weeks	Reid*	

BEAUTY THERAPY

Courses	Delivery	Duration	Location	AA
Diploma of Beauty Therapy SHB50121	FT/PT	1 year	Reid*	
Certificate IV in Beauty Therapy SHB40121	FT/PT	1 year	Reid*	Yes

FASHION

Courses	Delivery	Duration	Location	AA
Diploma of Apparel, Fashion and Textiles MST50122	FT/PT	2 years	Reid*	
Certificate III in Apparel, Fashion and Textiles MST31022	FT/PT	2 years	Reid*	

FLORISTRY

Courses	Delivery	Duration	Location	AA
Certificate III in Floristry SFL30115	PT	2 years	Bruce	Yes
Non-Accredited Training Flowers for the Marketplace	PT	6 weeks	Bruce	

GRAPHIC DESIGN

Courses	Delivery	Duration	Location	AA
Advanced Diploma of Graphic Design CUA60320	FT	1 year	Reid*	
Diploma of Graphic Design CUA50720	FT/PT	1.5 years	Reid*	
Statement of Attainment Preparatory Skill Set for Professional Graphic Design Practice CUASS00105	ON	12 weeks	Reid*	
Non-Accredited Training Adobe Photoshop Fundamentals	FT/PT	8 weeks	Reid*	

HAIRDRESSING

Courses	Delivery	Duration	Location	AA
Certificate III in Hairdressing SHB30416	FT/PT	1.5 years or 2-2.5-year apprenticeship	Reid*	Yes

INTERIOR DESIGN

Courses	Delivery	Duration	Location	AA
Advanced Diploma of Interior Design MSF60122	FT/PT	2 years	Reid*	
Diploma of Interior Design MSF50222	FT/PT	1.5 years	Reid*	
Certificate IV in Interior Decoration MSF40122	FT/PT	1 year	Reid*	

LIVE THEATRE PRODUCTION

Courses	Delivery	Duration	Location	AA
Certificate III in Live Production and Technical Services CUA30420	FT	9 months	Canberra Theatre Centre	

MAKE-UP

Courses	Delivery	Duration	Location	AA
Certificate III in Make-Up SHB30221	FT/PT	6 months	Reid*	

MEDIA

Courses	Delivery	Duration	Location	AA
Diploma of Screen and Media CUA51020	FT	1 year	Reid*	
Statement of Attainment Write Content for Media	PT	8 weeks	Reid*	
Statement of Attainment Film Festival Production	PT	8 weeks	Reid*	

MUSIC

Courses	Delivery	Duration	Location	AA
Diploma of Music CUA50820	FT/PT	1 year	Reid*	
Certificate IV in Music CUA40920	FT/PT	9 months	Reid*	
Certificate III in Music CUA30920	FT/PT	6 months	Reid*	
Non-Accredited Training Club DJ Advanced	PT	9 weeks	Reid*	
Non-Accredited Training Club DJ Fundamentals	PT	9 weeks	Reid*	
Non-Accredited Training Pro Tools 101	PT	3 days	Reid*	
Non-Accredited Training Pro Tools 201	PT	3 days or 9 weeks	Reid*	

PHOTOGRAPHY

Courses	Delivery	Duration	Location	AA
Diploma of Photography and Digital Imaging CUA50920	FT	1 year	Reid*	
Certificate IV in Photography and Digital Imaging CUA41120	FT/PT	1 year	Reid*	

VISUAL ARTS

Courses	Delivery	Duration	Location	AA
Diploma of Visual Arts CUA51120	FT/PT	1 year	Reid*	
Certificate IV in Visual Arts CUA41320	FT/PT	1 year	Reid*	

*From Semester 2 2025, the location of this course will transition from CIT Reid to the new CIT Woden campus. CIT will provide support for students who will be making the move to Woden. Find out more: cit.edu.au/woden

FT: Full-time PT: Part-time FL: Flexible Learning ON: Online AA: Apprenticeship, Traineeship or School-based Apprenticeship

Course details correct at time of publication. Location may change. For the most up-to-date information about courses, including approximate fees, please visit cit.edu.au

CONSTRUCTION, BUILDING AND TRADES

Build your passion for construction, building and trades, with a hands-on training experience designed to meet the growing demand for skilled tradespeople. Whether you are crafting homes or mastering essential services like automotive and plumbing, our courses provide a gateway to a thriving career. Led by highly experienced teachers, who work in the local industry, our courses offer invaluable real-world insights. You'll have access to industry-standard equipment, such as plumbing facilities, custom-built electrical and electronics workshops and an Electric Vehicle (EV) Lab. Gain the trade knowledge and skills you need to unlock job opportunities and build a successful future in the trades.

AUTOMOTIVE

Courses	Delivery	Duration	Location	AA
Certificate III in Automotive Body Repair Technology AUR32120	PT	3 years	Fyshwick	Yes
Certificate III in Automotive Electrical Technology AUR30320	PT	3 years	Fyshwick	Yes
Certificate III in Automotive Refinishing Technology AUR32420	PT	3 years	Fyshwick	Yes
Certificate III in Heavy Commercial Vehicle Mechanical Technology AUR31120	PT	3 years	Fyshwick	Yes
Certificate III in Light Vehicle Mechanical Technology AUR30620	PT	3 years	Fyshwick	Yes
Certificate III in Mobile Plant Technology AUR31220	PT	3 years	Fyshwick	Yes
Statement of Attainment Automotive Air Conditioning	FT/PT/FL	2 days or 4 evenings	Fyshwick	

BUILDING DESIGN

Courses	Delivery	Duration	Location	AA
Certificate IV in Residential Drafting CPP40121	FT/PT/FL	9 months	Bruce	
Statement of Attainment training in 3D Models of Building Designs	PT/ON	17 weeks	Bruce	

BUILDING MANAGEMENT

Courses	Delivery	Duration	Location	AA
Diploma of Building and Construction (Building) CPC50220	FT/PT	2 years	Bruce	Yes
Certificate IV in Building and Construction CPC40120	FT/PT	1.5 years	Bruce	Yes
Certificate IV in Building Project Support CPC40320	FT/PT	1.5 years	Bruce	Yes
Certificate II in Construction Pathways CPC20220	PT	1 year	Bruce	Yes
Statement of Attainment training in 3D Models of Building Designs	PT/ON	17 weeks	Bruce	



CARPENTRY AND CABINET MAKING

Courses	Delivery	Duration	Location	AA
Certificate III in Cabinet Making and Timber Technology (Furniture) MSF30322	PT	2.5 years	Bruce	Yes
Certificate III in Carpentry CPC30220	PT	3 years	Bruce	Yes

CONSTRUCTION SAFETY TRAINING

Courses	Delivery	Duration	Location	AA
Statement of Attainment General Construction Induction (White Card Training)	PT/ON	1 day	Bruce	
Statement of Attainment Height Safety	PT/ON/FL	1 day	Bruce	
Statement of Attainment Course in Asbestos Awareness 11084NAT	FT/FL	4 hours	Bruce	
Statement of Attainment Course in Crystalline Silica Exposure Prevention 10830NAT	PT	4 hours	Bruce	
Statement of Attainment Course in Working Safely with Asbestos Containing Materials 10852NAT	PT	4 hours	Bruce	

ELECTRICAL, REFRIGERATION AND AIR-CONDITIONING

Courses	Delivery	Duration	Location	AA
Certificate III in Air-conditioning and Refrigeration UEE32220	PT	3 years +1 (capstone)	Fyshwick	Yes
Certificate III in Electrotechnology Electrician UEE30820	PT	3 years +1 (capstone)	Fyshwick	Yes

ELECTRICAL, REFRIGERATION AND AIR-CONDITIONING – POST-TRADE COURSES

Courses	Delivery	Duration	Location	AA
Statement of Attainment Restricted Electrical Disconnect – Reconnect	PT	10 weeks	Fyshwick	

ELECTRONICS

Courses	Delivery	Duration	Location	AA
Certificate II in Electronics UEE21920	PT	1 year	Fyshwick	Yes
Certificate III in Electronics and Communications UEE30920	FT/PT	3 years	Fyshwick	Yes

ENGINEERING

Courses	Delivery	Duration	Location	AA
Statement of Attainment 2D Engineering Drafting	PT	6 months	Bruce	

GLAZING, PAINTING, PLASTERING AND TILING

Courses	Delivery	Duration	Location	AA
Certificate III in Glass and Glazing MSF30422	PT	2.5 years	Bruce	Yes
Certificate III in Painting and Decorating CPC30620	PT	2.5 years	Bruce	Yes
Certificate III in Wall and Ceiling Lining CPC31220	PT	2.5 years	Bruce	Yes
Certificate III in Wall and Floor Tiling CPC31320	PT	2.5 years	Bruce	Yes

HIGH RISK WORK LICENCE – CRANE LICENCES

Courses	Delivery	Duration	Location	AA
Statement of Attainment Operating a Mobile Crane for a Licence [CN to CO]	PT	4 weeks	Bruce	
Statement of Attainment Licence to Operate a Tower Crane	PT	4 weeks	Bruce	
Statement of Attainment Operating a Vehicle Loading Crane (capacity 10 metre tonnes and above) (CV)	PT	4 weeks	Bruce	
Non-Accredited Training Verification of Currency (VOC) in High Risk Work – Cranes	PT	1 day	Bruce	

HIGH RISK WORK LICENCE – DOGGING, RIGGING AND SCAFFOLDING LICENCES

Courses	Delivery	Duration	Location	AA
Statement of Attainment Licence to Erect, Alter, and Dismantle Scaffolding	PT	4 weeks	Bruce	
Statement of Attainment Licence to Perform Dogging	PT	4 weeks	Bruce	
Statement of Attainment training in Rigging for a Licence	PT	4 weeks	Bruce	
Non-Accredited Training Verification of Currency (VOC) in High Risk Work – Rigging	PT	1 day	Bruce	
Non-Accredited Training Verification of Currency (VOC) in High Risk Work – Dogging	PT	1 day	Bruce	
Non-Accredited Training Verification of Currency (VOC) in High Risk Work – Scaffolding	PT	1 day	Bruce	
Non-Accredited Training Verification of Currency (VOC) in High Risk Work – Personnel and Material Hoists	PT	1 day	Bruce	

HIGH RISK WORK LICENCE – ELEVATED WORK PLATFORM (EWP) LICENCE

Courses	Delivery	Duration	Location	AA
Statement of Attainment Operating a Boom Type Elevated Platform for a Licence	PT/FL	3 days	Bruce	
Non-Accredited Training Verification of Currency (VOC) in Elevated Work Platforms under 11 metres	PT	1 day	Bruce	
Non-Accredited Training Verification of Currency (VOC) in Operation of Boom Type Elevated Work Platform (and scissor lift)	PT	1 day	Bruce	

HIGH RISK WORK LICENCE – FORKLIFT LICENCE

Courses	Delivery	Duration	Location	AA
Statement of Attainment Forklift Operations	FT	3 days	Bruce	
Non-Accredited Training Verification of Currency (VOC) in High Risk Work – Forklift	PT	1 day	Bruce	

METAL FABRICATION

Courses	Delivery	Duration	Location	AA
Certificate III in Engineering – Fabrication Trade (Boilermaking/welding) MEM31922	PT	3 years	Fyshwick	Yes
Certificate III in Engineering – Fabrication Trade (Sheetmetal working) MEM31922	PT	3 years	Fyshwick	Yes

PLUMBING

Courses	Delivery	Duration	Location	AA
Certificate III in Plumbing CPC32420	PT	3 years	Fyshwick	Yes
Certificate III in Roof Plumbing CPC32620	PT	1 year	Fyshwick	Yes
Certificate II in Drainage CPC20720	PT	1 year	Fyshwick	Yes
Statement of Attainment Backflow Prevention	FL	3-8 days	Fyshwick	
Statement of Attainment Drainage (Licensing)	PT	6 months	Fyshwick	
Statement of Attainment Gasfitting Plumbing (Licensing)	PT/FL	6 months	Fyshwick	
Statement of Attainment Hot Water Temperature Control Devices	PT	3-5 days	Fyshwick	
Statement of Attainment Plumbing Prevocational Skills	PT	6 months	Fyshwick	
Statement of Attainment Plumbing Work Practice	PT	6 months	Fyshwick	
Statement of Attainment Restricted Electrical Disconnect – Reconnect	PT	10 weeks	Fyshwick	
Statement of Attainment Sanitary Pipework (Licensing)	PT	6 months	Fyshwick	
Statement of Attainment Water Plumbing (Licensing)	PT	6 months	Fyshwick	
Statement of Attainment training in Duct Installation	PT	3 weeks	Fyshwick	

*From Semester 2 2025, the location of this course will transition from CIT Reid to the new CIT Woden campus. CIT will provide support for students who will be making the move to Woden. Find out more: cit.edu.au/woden

FT: Full-time PT: Part-time FL: Flexible Learning ON: Online AA: Apprenticeship, Traineeship or School-based Apprenticeship

Course details correct at time of publication. Location may change. For the most up-to-date information about courses, including approximate fees, please visit cit.edu.au

EDUCATION AND COMMUNITY

Gain the skills and confidence to make a meaningful impact, and contribute to your community, through a rewarding career in education and community. Whether you are looking to start a career in community services or education, gain the foundational skills you need to prepare for the workplace or improve your spoken and written English, our courses offer a variety of pathways and job opportunities. From dedicated education and care facilities, to work placements, industry speakers and project-based learning, we provide you with real-world skills to prepare you for entering the industry.

ACT SENIOR SECONDARY (POST-SCHOOL OPTION)

Courses	Delivery	Duration	Location	AA
ACT Senior Secondary Certificate	FT/PT	Varied	Bruce	

ALCOHOL AND OTHER DRUGS

Courses	Delivery	Duration	Location	AA
Certificate IV in Alcohol and Other Drugs CHC43215	FT/PT	1 year	Bruce	Yes

CHILDREN'S EDUCATION AND CARE

Courses	Delivery	Duration	Location	AA
Diploma of Early Childhood Education and Care CHC50121	FT/PT	1 year	Bruce	Yes
Certificate IV in School Based Education Support CHC40221	FT/PT	1 year	Bruce	Yes
Certificate III in Early Childhood Education and Care CHC30121	FT/PT	1 year	Bruce	Yes
Statement of Attainment Introduction to Education Support	ON	9 weeks	Bruce	

COMMUNITY DEVELOPMENT AND SERVICES

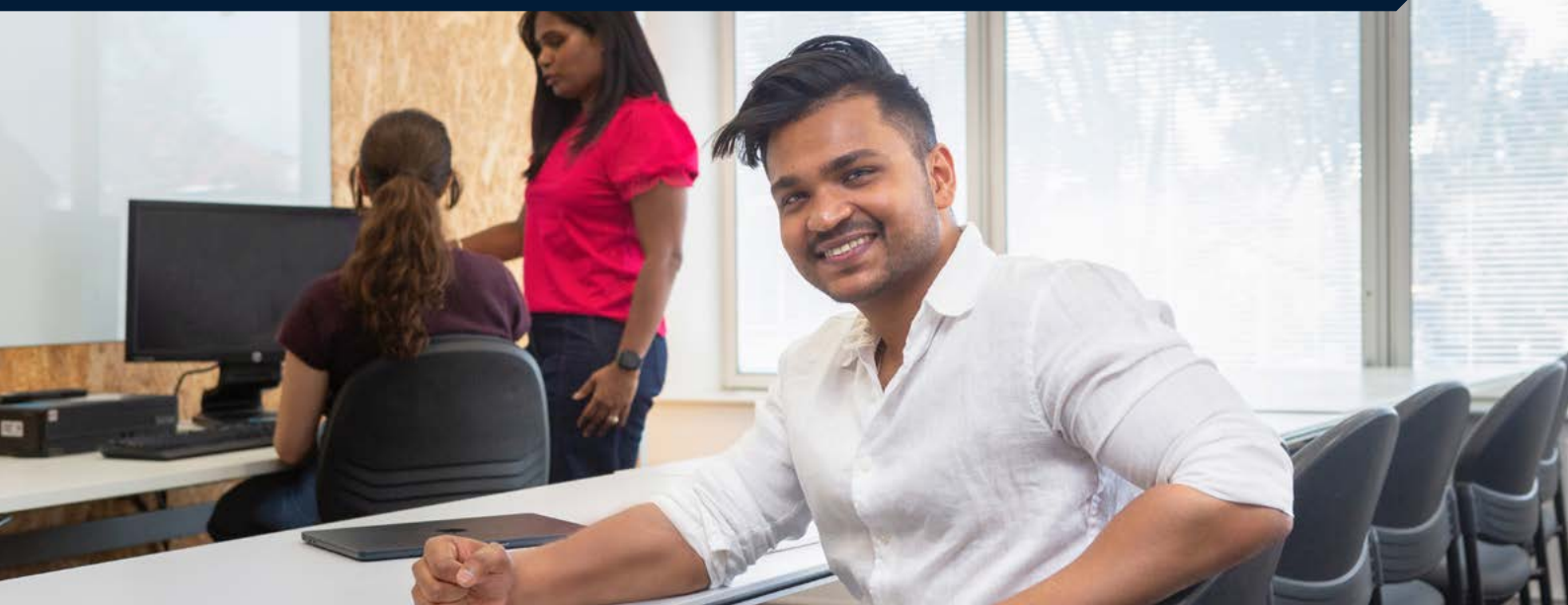
Courses	Delivery	Duration	Location	AA
Diploma of Community Services CHC52015 [^]	FT/PT	1 year	Bruce	Yes
Certificate IV in Community Services CHC42021	FT/PT	1 year	Bruce	
Certificate IV in Community Development CHC42121	FT/PT	1 year	Bruce	
Certificate IV in Mental Health CHC43315	FT/PT	1 year	Bruce	
Certificate IV in Youth Work CHC40421	FT/PT	1 year	Bruce	
Statement of Attainment Supporting Mental Health	PT/FL	6 weeks	Reid*	

[^]Course is in transition. You may be transferred to a replacement course in 2025.

*From **Semester 2 2025**, the location of this course will transition from CIT Reid to the new CIT Woden campus. CIT will provide support for students who will be making the move to Woden. Find out more: cit.edu.au/woden

FT: Full-time **PT:** Part-time **FL:** Flexible Learning **ON:** Online **AA:** Apprenticeship, Traineeship or School-based Apprenticeship

Course details correct at time of publication. Location may change. For the most up-to-date information about courses, including approximate fees, please visit cit.edu.au



ENGLISH LANGUAGE

Courses	Delivery	Duration	Location	AA
Certificate IV in EAL (Further Study) 22646VIC	FT/PT	Varied	Reid*	
Certificate III in Spoken and Written English 10729NAT^	FT/PT	Varied	Gungahlin Reid*	
Certificate II in Spoken and Written English 10728NAT^	FT/PT	Varied	Gungahlin Reid*	
Certificate I in Spoken and Written English 10727NAT^	FT/PT	Varied	Gungahlin Reid*	

FOUNDATION SKILLS

Courses	Delivery	Duration	Location	AA
Certificate II in Skills for Work and Vocational Pathways FSK20119	FT/PT	6 months	Bruce Reid*	
Statement of Attainment Communication for the Workplace	PT/ON	8 weeks	Bruce Reid* Gungahlin Tuggeranong	
Statement of Attainment Literacy for the Workplace	PT/ON	8 weeks	Bruce Reid* Gungahlin Tuggeranong	
Statement of Attainment Numeracy for the Workplace	PT/ON	8 weeks	Bruce Reid* Gungahlin Tuggeranong	
Statement of Attainment Preparing for Work	PT/ON	8 weeks	Bruce Reid* Gungahlin Tuggeranong	
Non-Accredited Training Practical Skills for Work and Learning	PT/ON	Varied	Bruce Reid* Gungahlin Tuggeranong	

FUTURE ENERGY SKILLS

Prepare for a successful and rewarding career in the renewable energy sector and gain the industry-ready skills needed to meet the growing demand for skilled renewable energy professionals. You'll join a workforce that is contributing to Australia's net zero future and make a global impact in the renewable energy sector. Being at the forefront of renewable energy education and training at CIT, you can explore cutting-edge courses in solar, wind and electric vehicle technology, taught in state-of-the-art facilities. Be part of a city powered by 100 per cent renewable electricity and leading the way to a sustainable future.

AUTOMOTIVE

Courses	Delivery	Duration	Location	AA
Certificate III in Automotive Electric Vehicle Technology (Light Vehicle) AUR32721	PT	3 years	Fyshwick	Yes
Statement of Attainment Battery Electric Vehicle Inspection and Servicing Skill Set AURSS00064	PT	4 days	Fyshwick	
Statement of Attainment Depower and Reinitialise Battery Electric Vehicles	PT	2 days	Fyshwick	
Statement of Attainment Electric Vehicle Diagnose and Repair Skill Set – Heavy Vehicle	FT	12 days	Fyshwick	
Statement of Attainment Electric Vehicle Diagnose and Repair Skill Set – Light Vehicle	FT	9 days	Fyshwick	
Non-Accredited Training Electric Vehicle (EV) Charging and Associated Equipment	PT	4 hours	Fyshwick	

CONSTRUCTION SAFETY TRAINING

Courses	Delivery	Duration	Location	AA
Statement of Attainment Insulation Installation	FT	5 days	Bruce	

ELECTRICAL, REFRIGERATION AND AIR-CONDITIONING

Courses	Delivery	Duration	Location	AA
Certificate III in Air-conditioning and Refrigeration UEE32220	PT	3 years +1 (capstone)	Fyshwick	Yes
Certificate III in Electrotechnology Electrician UEE30820	PT	3 years +1 (capstone)	Fyshwick	Yes



ELECTRICAL, REFRIGERATION AND AIR-CONDITIONING – POST-TRADE COURSES

Courses	Delivery	Duration	Location	AA
Statement of Attainment Designer-Installer Grid-Connected Photovoltaic Systems	PT	5 weeks	Fyshwick	

ELECTRONICS

Courses	Delivery	Duration	Location	AA
Certificate III in Electronics and Communications UEE30920	FT/PT	3 years	Fyshwick	Yes

GLOBAL WIND

Courses	Delivery	Duration	Location	AA
Industry Endorsed Training Global Wind Organisation Basic Safety Training Refresher (BSTR)	PT	3 days	Bruce	
Industry Endorsed Training Global Wind Organisation (Basic Safety Training BST)	PT	5 days	Bruce	

FT: Full-time PT: Part-time FL: Flexible Learning ON: Online AA: Apprenticeship, Traineeship or School-based Apprenticeship

Course details correct at time of publication. Location may change. For the most up-to-date information about courses, including approximate fees, please visit cit.edu.au

HEALTH AND WELLBEING

Discover the positive impact you can create by turning your passion for helping others into a fulfilling career in the health and fitness sector. From aged care and nursing, to fitness and sport, studying a health and fitness course allows you to gain a nationally recognised qualification. Our courses are delivered by industry professionals, combining theoretical knowledge with hands-on practical skills so you graduate with job-ready skills, and exposure to the industry. CIT Bruce offers state-of-the-art nursing labs, simulated health care facilities, a fully equipped fitness centre and a fit and well massage clinic.

AGED CARE

Courses	Delivery	Duration	Location	AA
Certificate III in Individual support (Ageing) CHC33021	FT/PT	1 year	Bruce	

ALLIED HEALTH

Courses	Delivery	Duration	Location	AA
Certificate IV in Allied Health Assistance HLT43021	FT	1 year	Bruce	

COVID-19 INFECTION CONTROL

Courses	Delivery	Duration	Location	AA
Non-Accredited Training Infection Control Skills	PT	4 hours	Bruce	

DENTAL

Courses	Delivery	Duration	Location	AA
Certificate IV in Dental Assisting HLT45021	PT	6 months	Bruce	Yes
Certificate III in Dental Assisting HLT35021	PT	6 months	Bruce	Yes

DISABILITY

Courses	Delivery	Duration	Location	AA
Certificate III in Individual Support (Disability) CHC33021	FT/PT	6 months	Bruce	Yes

FITNESS AND SPORT

Courses	Delivery	Duration	Location	AA
Diploma of Sport SIS50321	FT/PT/ON/ FL	1 year 2 years	Bruce/ Industry	
Certificate IV in Fitness SIS40221	FT/PT	6 months	Bruce	Yes
Certificate III in Fitness SIS30321	FT/PT	6 months	Bruce	Yes



NURSING

Courses	Delivery	Duration	Location	AA
Diploma of Nursing HLT54121	FT/PT	1.5 years	Bruce	
Certificate III in Health Services Assistance (Assisting in nursing work in acute care) HLT33115	FT	9 months	Bruce	

MASSAGE

Courses	Delivery	Duration	Location	AA
Diploma of Remedial Massage HLT52015^	FT/PT	1 year	Bruce	
Certificate IV in Massage Therapy HLT42015^	FT/PT	9 months	Bruce	
Non-Accredited Training Myofascial Cupping for Soft Tissue Dysfunction	PT	1 day	Bruce	

POPULATION HEALTH

Courses	Delivery	Duration	Location	AA
Certificate IV in Population Health HLT46015	FT/PT	6 months	Bruce	Yes

WORK HEALTH AND SAFETY

Courses	Delivery	Duration	Location	AA
Certificate IV in Work Health and Safety BSB41419	PT/ON/FL	1 year	Bruce	

^Course is in transition. You may be transferred to a replacement course in 2025.

FT: Full-time PT: Part-time FL: Flexible Learning ON: Online AA: Apprenticeship, Traineeship or School-based Apprenticeship

Course details correct at time of publication. Location may change. For the most up-to-date information about courses, including approximate fees, please visit cit.edu.au

HOSPITALITY, CULINARY AND TOURISM

Turn your love for food, travel or events into a rewarding career, and discover local and global career opportunities in the exciting world of hospitality, culinary or tourism. Our highly experienced educators provide practical learning opportunities, giving you hands-on experience in real-life settings. Whether you are learning in our world-class commercial kitchen, restaurant, café and bar or travel agency, our courses are designed to prepare you to enter the workforce. You'll build industry contacts and network as you learn from industry professionals.

CULINARY

Courses	Delivery	Duration	Location	AA
Certificate IV in Kitchen Management SIT40521	FT/PT	1.5 years	Reid*	
Certificate III in Baking FBP30521	PT	3 years	Reid*	Yes
Certificate III in Bread Baking FBP30421	PT	2 years	Reid*	Yes
Certificate III in Cake and Pastry FBP30321	PT	2.5 years	Reid*	Yes
Certificate III in Commercial Cookery SIT30821	PT/FT	2.5 years 1 year	Reid*	Yes
Certificate III in Meat Processing (Retail Butcher) AMP30815	FT/PT	3 years	Workplace	Yes
Certificate III in Patisserie SIT31021	PT/FT	2 years 1 year	Reid*	Yes
Certificate II in Cookery SIT20421	FT/PT	6 months	Reid*	
Statement of Attainment Food Safety Supervision Skill Set SITSS00069	FL	18 weeks		

EVENTS

Courses	Delivery	Duration	Location	AA
Diploma of Event Management SIT50322	PT FT	Varied 1 year	Reid*	
Certificate III in Events SIT30522	PT/FT	6 months	Reid*	Yes



HOSPITALITY

Courses	Delivery	Duration	Location	AA
Advanced Diploma of Hospitality Management SIT60322	FT/PT	Varied	Reid*	
Diploma of Hospitality Management SIT50422	FT/PT	Varied	Reid*	
Certificate III in Hospitality SIT30622	FT/PT	6 months	Reid*	Yes
Statement of Attainment Bar Service	PT	5 weeks	Reid*/Flexible/ Online	
Statement of Attainment Customer Service SITSS00078	25 hours ON	4 hours over 18 weeks	Reid*/Flexible/ Online	
Statement of Attainment Hospitality Compliance Skill Set SITSS00070	ON	40 hours	Reid*/Flexible/ Online	
Statement of Attainment Provide Responsible Gambling Services	ON/FL	1 day	Reid*/Flexible/ Online	
Statement of Attainment Responsible Service of Alcohol	ON/FL	4-6 hours Varied	Reid*/Flexible/ Online	
Non-Accredited Training Coffee Basics	PT	5 hours	Reid* Tuggeranong	

TOURISM

Courses	Delivery	Duration	Location	AA
Diploma of Travel and Tourism Management SIT50122	FT/PT	1 year	Reid*	

*From Semester 2 2025, the location of this course will transition from CIT Reid to the new CIT Woden campus. CIT will provide support for students who will be making the move to Woden. Find out more: cit.edu.au/woden

FT: Full-time PT: Part-time FL: Flexible Learning ON: Online AA: Apprenticeship, Traineeship or School-based Apprenticeship

Course details correct at time of publication. Location may change. For the most up-to-date information about courses, including approximate fees, please visit cit.edu.au

SCIENCE, HORTICULTURE AND ENVIRONMENT

Embark on an exciting path of discovery as you embrace your passion for science, the environment or sustainability. Whether you choose to pursue a career in animal studies, environmental sciences, horticulture, laboratory studies and forensics or renewable energy skills, we provide a hands-on learning experience essential for industry entry. Within our state-of-the-art facilities and dedicated laboratories, immerse yourself in simulated working environments and community-based projects. You will gain exposure to the industry and equipment you will be working with daily when you enter the workforce.

ANIMAL STUDIES

Courses	Delivery	Duration	Location	AA
Certificate IV in Veterinary Nursing ACM40418	PT	1.5 years	Bruce	Yes
Certificate III in Animal Care Services ACM30122	FT/PT	6 months	Bruce	Yes
Certificate II in Animal Care ACM20121	FT/PT	6 months	Bruce	Yes
Statement of Attainment Pet Care Skills	ON/FL	8 weeks	Bruce	
Statement of Attainment Skills for Dog Care	PT	7 weeks	Bruce	

HORTICULTURE

Courses	Delivery	Duration	Location	AA
Diploma of Horticulture AHC50416^	FT/PT	1 year	Bruce	
Certificate III in Conservation and Ecosystem Management AHC31421^	PT	1-2 years	Bruce	
Certificate III in Horticulture AHC30722	FT/PT	1-3 years	Bruce	Yes
Certificate III in Landscape Construction AHC30921	FT/PT/FL	1-3 years	Bruce	Yes
Certificate III in Parks and Gardens AHC31021^	FT/PT	1-3 years	Bruce	Yes
Certificate III in Sports Turf Management AHC31319^	ON/FL	1-3 years	Bruce	Yes
Non-Accredited Training – Introduction to Permaculture Design	PT	5 days	Bruce	



LABORATORY STUDIES AND FORENSICS

Courses	Delivery	Duration	Location	AA
Diploma of Forensic Identification (Biometrics) 11217NAT	PT/ON	2-2.5 years	Bruce	
Diploma of Forensic Identification (Document Examination) 11217NAT	PT/ON	2-2.5 years	Bruce	
Diploma of Forensic Identification (Facial) 11217NAT	PT/ON	2 years	Bruce	
Certificate IV in Biometric Technologies 10837NAT	PT/ON	2 years	Bruce	
Certificate IV in Laboratory Techniques MSL40122	PT	1 year	Bruce	
Certificate III in Laboratory Skills MSL30122	FT/PT	6 months	Bruce	

^Course is in transition. You may be transferred to a replacement course in 2025.

FT: Full-time **PT:** Part-time **FL:** Flexible Learning **ON:** Online **AA:** Apprenticeship, Traineeship or School-based Apprenticeship

Course details correct at time of publication. Location may change. For the most up-to-date information about courses, including approximate fees, please visit cit.edu.au

COURSE INDEX

A

3D Models of Building Designs	32
Aboriginal and/or Torres Strait	25
Islander Cultural Arts.....	25
Accounting and Bookkeeping	26
Accounting Fundamentals	26
Accounting Principles Skill Set.....	26
Accounting	26
Accounts Administration	26
ACT Senior Secondary Certificate	36
Air-conditioning and Refrigeration	38
Alcohol and Other Drugs	25
Allied Health Assistance.....	40
Animal Care Services	44
Animal Care	44
Asbestos Awareness.....	33
Automotive Air Conditioning.....	32
Automotive Body Repair Technology	32
Automotive Electric Vehicle Technology (Light Vehicle)	38
Automotive Electrical Technology	32
Automotive Heavy Commercial Vehicle Mechanical Technology....	32
Automotive Light Vehicle Mechanical Technology.....	32
Automotive Mobile Plant Technology	32
Automotive Refinishing Technology	32

B

Backflow Prevention.....	35
Baking	42
Bar Service	43
Barbering (Advanced)	29
Barbering.....	29

BAS Agent Registration Skill Set ..	26
Battery Electric Vehicle Inspection and Servicing Skill Set	38
Beauty Therapy.....	30
Biometric Technologies	45
Bread Baking	42
Building and Construction (Building).....	32
Building and Construction	32
Building Design	32
Building Project Support	32
Business	27
Butchery.....	42

C

Cabinet Making and Timber Technology (Furniture).....	33
Cake and Pastry	42
Carpentry	33
Club DJ (Advanced)	31
Club DJ (Fundamentals)	31
Coffee Basics	43
Commercial Cookery	42
Commercial Law for Tax Agents Skill Set	26
Communication for the Workplace.....	37
Community Services.....	25, 36
Conservation and Ecosystem Management.....	44
Construction Induction (General).....	33
Construction Pathways.....	32
Cookery (Commercial)	42
Cookery	42
Crystalline Silica Exposure Prevention.....	33
Customer Service.....	43
Cyber Security Awareness (Introduction)	27

Cyber Security Awareness Skill Set	27
Cyber Security Threat Assessment and Risk Management Skill Set	27
Cyber Security	27

D

Dental Assisting.....	40
Depower and Reinitialise Battery Electric Vehicles.....	38
Disability.....	40
Dog Care Skills	44
Dogging (Licence).....	34
Drainage (Licensing)	35
Drainage	35
Duct Installation	35

E

Early Childhood Education and Care	36
Education Support (Introduction).....	36
Electric Vehicle Diagnose and Repair Skill Set – Heavy Vehicle/ Light Vehicle.....	38
Electric Vehicle (EV) Charging and Associated Equipment	38
Electronics and Communications	39
Electronics	39
Electrotechnology Electrician	38
Elevated Platform for a Licence....	35
Elevated Work Platforms under 11 metres – Verification of Currency (VOC)	35
Engineering – Fabrication Trade (Boilermaking/ welding)	35
Engineering – Fabrication Trade (Sheetmetal working)	35
Engineering – 2D Engineering Drafting	34

English – Spoken and Written	37
Essential Eight Training	27
Event Management	42
Events	42

F

Fashion – Apparel, Fashion and Textiles	30
Film Festival Production	31
Fitness	40
Floristry	30
Flowers for the Marketplace	30
Food Safety Supervision Skill Set	42
Forensic Identification (Biometrics)	45
Forensic Identification (Document Examination)	45
Forensic Identification (Facial)	45

G

Gasfitting Plumbing (Licensing)....	35
General Construction Induction (White Card Training).....	33
General Education for Adults.....	25
Glass and Glazing.....	34
Global Wind Organisation (Basic Safety Training BST)	39
Global Wind Organisation Basic Safety Training Refresher (BSTR) ..	39
Graphic Design	30

H

Hairdressing	30
Health Services Assistance (Assisting in nursing work in acute care).....	41
Height Safety	33
High Risk Work – Cranes – Verification of Currency (VOC)	34

High Risk Work – Dogging – Verification of Currency (VOC)	34
---	----

High Risk Work – Forklift – Verification of Currency (VOC)	35
--	----

High Risk Work – Personnel and Material Hoists – Verification of Currency (VOC)	34
---	----

High Risk Work – Rigging – Verification of Currency (VOC)	34
---	----

High Risk Work – Scaffolding – Verification of Currency (VOC)	34
---	----

Horticulture.....	44
-------------------	----

Hospitality Compliance Skill Set...	43
-------------------------------------	----

Hospitality Management	43
------------------------------	----

Hospitality	43
-------------------	----

Hot Water Temperature Control Devices	35
---	----

Human Resources Essentials	28
----------------------------------	----

Individual Support (Ageing).....	40
----------------------------------	----

Individual Support (Disability)	40
---------------------------------------	----

Infection Control Skills	40
--------------------------------	----

Information Technology.....	28
-----------------------------	----

Insulation Installation	38
-------------------------------	----

Interior Decoration.....	30
--------------------------	----

Interior Design	30
-----------------------	----

Introduction to Cyber Security Awareness.....	27
---	----

Introduction to Education Support	36
---	----

Introduction to Organisational Cyber Security	27
---	----

Introduction to Permaculture Design.....	44
--	----

Introduction to Project Management Practice	28
---	----

J

Justice of the Peace – ACT	28
----------------------------------	----

K

Kitchen Management	42
--------------------------	----

L

Laboratory Skills	45
-------------------------	----

Laboratory Techniques.....	45
----------------------------	----

Landscape Construction	45
------------------------------	----

Leadership and Management	28
---------------------------------	----

Legal Services	28
----------------------	----

Licence to Erect, Alter, and Dismantle Scaffolding	34
--	----

Licence to Operate a Tower Crane	34
--	----

Licence to Perform Dogging.....	34
---------------------------------	----

Literacy for the Workplace.....	37
---------------------------------	----

Live Production and Technical Services	30
--	----

M

Make-up	31
---------------	----

Management.....	28
-----------------	----

Massage Therapy.....	41
----------------------	----

Meat Processing (Retail Butcher)...	42
-------------------------------------	----

Mental Health.....	25, 36
--------------------	--------

Metal Fabrication	35
-------------------------	----

Mobile Crane for a Licence.....	34
---------------------------------	----

Music.....	31
------------	----

Myofascial Cupping for Soft Tissue Dysfunction	41
--	----

N

Networking and Computer Hardware	28
--	----

Networking and Web Development	28
--------------------------------------	----

Numeracy for the Workplace.....	37
---------------------------------	----

Nursing	41
---------------	----

O

Occupational Therapy – Allied Health Assistance.....	40
--	----

Operating a Boom Type Elevated Platform for a Licence	35
---	----

Operating a Mobile Crane for a Licence	34
Operating a Vehicle Loading Crane (capacity 10 metre tonnes and above)	34
Operation of Boom Type Elevated Work Platform (and scissor lift) – Verification of Currency (VOC)	35
Organisational Cyber Security (Introduction)	27

P

Painting and Decorating	34
Paralegal Services	28
Parks and Gardens	44
Patisserie	42
Permaculture Design (Introduction)	44
Pet Care Skills	44
Photography and Digital Imaging ..	31
Physiotherapy – Allied Health Assistance	40
Plastering	34
Plumbing Prevocational Skills	35
Plumbing Work Practice	35
Plumbing	35
Population Health	41
Practical Skills for Work and Learning	37
Preparatory Skill Set for Professional Graphic Design Practice	30
Preparing for Work	37
Pro Tools 101	31
Pro Tools 201	31
Project Management Practice (Introduction)	28
Project Management Practice	28
Project Management	28

R

Remedial Massage	41
Residential Drafting	32
Responsible Gambling Services ...	43
Responsible Service of Alcohol	43
Restricted Electrical Disconnect – Reconnect	33
Rigging for a Licence	34
Road Ready	25
Roof Plumbing	35

S

Sanitary Pipework (Licensing)	35
Scaffolding (Licence)	34
School Based Education Support ..	36
Screen and Media	31
Skills for Dog Care	44
Skills for Work and Vocational Pathways	37
Spoken and Written English	37
Sport	40
Sports Turf Management	44

T

Tax Law for Tax Agents Skill Set (Tax documentation)	26
Tiling	34
Tourism	43
Tower Crane (Licence)	34
Travel and Tourism Management ..	43

V

Vehicle Loading Crane (capacity 10 metre tonnes and above)	34
Verification of Currency (VOC) in Elevated Work Platforms under 11 metres	35
Verification of Currency (VOC) in High Risk Work – Cranes	34


Verification of Currency (VOC) in High Risk Work – Dogging	34
Verification of Currency (VOC) in High Risk Work – Forklift	34
Verification of Currency (VOC) in High Risk Work – Personnel and Material Hoists	34
Verification of Currency (VOC) in High Risk Work – Rigging	34
Verification of Currency (VOC) in High Risk Work – Scaffolding	34
Verification of Currency (VOC) in Operation of Boom Type Elevated Work Platform (and scissor lift)	35
Veterinary Nursing	44
Visual Arts	31
Vocational Pathways – Skills for Work	37

W

Wall and Ceiling Lining	34
Wall and Floor Tiling	34
Water Plumbing (Licensing)	35
White Card Training	33
Work Health and Safety	41
Working Safely with Asbestos Containing Materials	33
Workplace Skills	37
Write Content for Media	31

Y

Youth Work	36
------------------	----



© Canberra Institute of Technology 2024

This work is copyright. Apart from any use as permitted under the *Copyright Act 1968*, no part may be reproduced by any process without prior written permission from CIT. Requests and inquiries concerning reproduction and rights should be addressed to the Copyright Officer, Canberra Institute of Technology, GPO Box 826, Canberra ACT 2601 or email copyrightCIT@cit.edu.au.

Not all courses are on offer at the same time. Canberra Institute of Technology reserves the right not to offer courses where there are insufficient student enrolments.

ABN 432 737 969 90

Canberra Institute of Technology
GPO Box 826 Canberra ACT 2601

6060107232-JUL 24

Contact us:



infoline@cit.edu.au



(02) 6207 3188

Connect with us:



Facebook:
cit.edu.au/facebook



LinkedIn
cit.edu.au/linkedin



YouTube
cit.edu.au/youtube



Instagram
[@citcanberra](https://citcanberra)



Find out more:
cit.edu.au