

CIT WODEN CAMPUS

CIT Student - Frequently Asked Questions (FAQs)

This document will be updated regularly by the CIT Campus Renewal team as new information becomes available for CIT Students.

If you have any questions that are not listed below, please contact [CIT Campus Renewal](#) to have your question(s) added.

General questions

1. Why is CIT Reid relocating to Woden?

The CIT Reid campus is being moved to Woden. The new CIT Woden campus will be a purpose-built facility and will provide the latest technology to CIT's teaching, learning and working environments. The CIT Woden Campus is just one key part of CIT's broader transformation, continually looking to improve campuses to enhance student learning outcomes.

2. What is planned for the CIT Woden campus?

CIT's new Woden campus will be a contemporary, smart campus and state-of-the-art facility that will deliver education and training to 6,500 students each year. The range of courses currently being delivered at CIT Reid will transition across to CIT Woden which will continue to provide skills and training opportunities to meet the growing demands of business, industry, and the ACT community, now and into the future.

3. What benefits will the CIT Woden campus offer to the ACT community and industry?

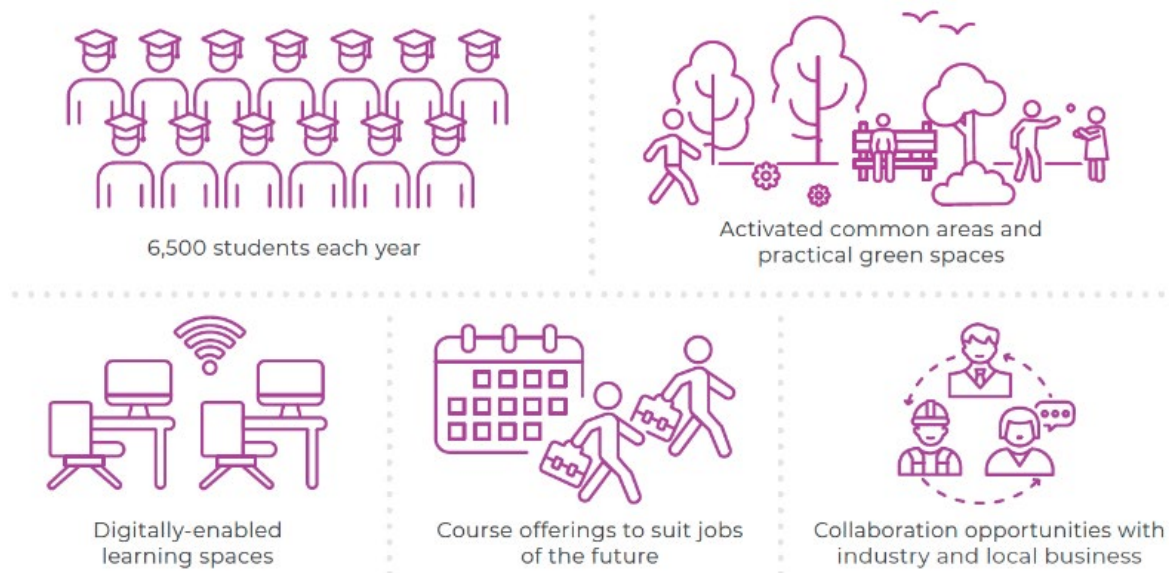
The new CIT Woden campus will stimulate the local economy and support the revitalisation of Woden, providing skills and training opportunities to meet the growing demands of business, industry, and the ACT community.

The new facility will incorporate a smart, sustainable campus design and current technology to offer courses that meet the vocational education and training requirements of a shifting ACT workforce.

Features will include:

- specialist learning environments;
- state-of-the-art IT and cyber training and digital learning spaces;
- a training restaurant with commercial training kitchens;
- function rooms, activated common areas and greenspace; and
- makerspaces, incubator hubs and innovation spaces for collaboration with industry and local business.

In proximity to the growing Woden business district, CIT will offer increased opportunities for students to undertake local job training opportunities during their studies.



4. Where is the campus located?

CIT Woden will be in the heart of Woden Town Centre at the former bus interchange on Callam Street in Woden. This central location in Woden offers increased opportunities for connection with public transport, businesses, industry and the community.

The new public transport interchange on Callam Street adjacent to CIT Woden will incorporate an improved and expanded bus interchange along with the Woden light rail terminus, future proofing the area for the provision of light rail to Canberra's south.

5. When will classes commence at CIT Woden?

Courses at CIT Woden commence in Semester 2 from 21 July 2025. Specific department start dates may vary.

6. What does this mean for CIT Students studying at CIT Reid?

Courses currently offered at CIT Reid will move to the new CIT Woden campus from Semester 2 2025. CIT will provide updates and support to help current and incoming students prepare for the transition to the new campus. Further information on the timing of the planned relocation of courses will be provided as it becomes available.

7. Where can I go for information about studying at Woden?

Students can visit the [CIT Woden](#) webpage and the [CIT](#) website for regular updates. CIT students will be provided updates from CIT staff, CIT Student Newsletter and eLearn. Students can contact CIT on (02) 6207 3188 or via infoline@cit.edu.au for further information.

8. What courses will be taught at Woden?

Courses currently offered at CIT Reid will move to the new Woden campus.

Find the complete list at cit.edu.au/woden.

9. What learning environments will be available to students?

The new campus facilities are designed to meet the needs of an evolving ACT workforce and include:

- specialist learning environments
- study spaces for individuals and groups of different sizes
- dedicated 24-hour study space with access to computers
- dedicated library services on the ground floor
- state-of-the-art IT and cyber training and digital learning spaces
- a training restaurant and commercial training kitchens
- a multi-purpose hall available for performances, training, and events
- spaces for collaboration and group-work learning activated common areas and greenspaces
- makerspaces, incubator hubs and innovation spaces for collaboration with industry and local businesses

10. What general facilities and amenities will be available for students?

The new CIT Woden campus will feature:

- informal gathering spaces and greenspaces
- a prayer and reflection room
- a parents room
- a sensory-free space
- student kitchenettes with access to hot and cold filtered water and microwaves
- secure bicycle parking including e-bike and e-scooter parking
- change room facilities include showers, toilets, and lockers
- a first-aid room
- printing facilities
- male, female, accessible and all-gender toilet amenities
- café and retail space
- an apprentice kitchen café, restaurant and produce shop
- a hairdressing and beauty salon
- CIT student support services including counselling rooms
- CIT student services

11. Will assistance be available for people with a disability or other barriers to study at Woden?

The CIT Woden Campus has been designed to meet Disability Discrimination ACT (DDA) Compliance Code requirements and provides an inclusive environment, including:

- accessible entrances and wider corridors for wheelchair access
- accessible end-of-trip facilities
- gender-neutral toilets and change facilities; and
- five operational lifts throughout the campus.

12. Can I do a tour of the Woden building before it officially opens?

Yes, CIT Woden site tours are available now. These tours will provide a visual overview of the Woden campus precinct and an understanding of the future campus facilities.

As the project progresses, there will be more to see. Please talk to your CIT teacher about organising a class tour or contact citcampuswoden@cit.edu.au with your tour enquiry.

13. What will happen to the Reid campus site once CIT vacates?

The University of New South Wales (UNSW) will acquire the site once the move to CIT Woden is complete. Learn more at: unsw.edu.au/canberra/about-us/our-campuses/city.

14. Where do I find latest images of the new campus?

The latest artist's impressions and an external flythrough video of the campus facilities is available on the CIT Woden webpage: cit.edu.au/woden.

15. What is the Youth Foyer that will be located next to CIT Woden?

The Youth Foyer will be a support facility for young people (aged 16-24 years) who are committed to education and training but at risk of homelessness. It will provide young people with stable accommodation, support services and opportunities to pursue education and training. It will include up to 20 independent living bedroom units, communal living spaces and private external green spaces.

The individual must be on an educational pathway (e.g. college, UNI, TAFE, CIT) to access this service.

Find out more at: act.gov.au/citcampuswoden/overview/woden-youth-foyer.

16. Will lockers be available?

Yes, secure and free of charge student lockers will be available throughout the campus, including throughout the corridors, the student commons areas and within specialist learning spaces such as fashion, culinary and hairdressing.

Parking and travel

17. What car parking options are there in and around Woden?

There are many car parking options in and around Woden. The [Westfield Woden](#) and [Parkopedia](#) websites can help you find parking options in Woden. [Park and Ride options](#) are also available.

18. What public transport options are available?

The transport interchange on Callam Street, directly opposite the CIT Woden Campus, will have bus services operational by mid-2025. Currently, there are 14 routes that stop at the Woden interchange with buses departing and arriving every 15 minutes to 30 minutes. There are also [Park and Ride options](#) available.

Details will be updated once the Woden transport interchange timetables are released by Transport Canberra in 2025. For further information see the Transport Canberra [Bus timetable](#).

19. Will change rooms and bike storage facilities be available at the new campus?

Yes, there will be approximately 200+ secure bicycle parks including e-bike and e-scooter parking in the basement for students to access. Female, male, accessible and all-gender change room facilities will be available to students on Level 2, including showers, toilets and lockers.

20. When will the light rail open?

The light rail to Woden is estimated to open between 2028 - 2033. Find out more on the ACT Government [Light Rail website](#).