

CIT Wireless Network

Configuration Guide for Mac OS X

System Requirements

- An Apple computer with an Airport or Airport compatible wireless device
- Administrator access to the machine
- An active Staff or Student account on the CIT network

Configuring a Location

We recommend the configuration of a location to contain the Canberra Institute of Technology specific wireless setup. This allows the separation of the CIT configuration from your normal or other configurations and the ability to quickly and easily swap between them.

Go to the **'Apple'** menu and select **'Network Preferences'** from the **'Location'** menu, or for OSX Lion **'System Preferences'** then **'Network'** and click on the **'Location'** dropdown.

Select **'New Location'** or **'Edit Locations...'** from the **'Location'** dropdown list.

With the **'+'** button, create a new location named something like **'Canberra Institute of Technology'**. Click on the **'Done'** button.

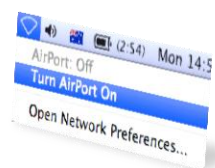
Enabling the Airport

Select the **'AirPort'** or **'WiFi'** item from the device list.

Click on the **'Turn AirPort On'** button.

or

Click on the **'AirPort'** icon from the menu bar and click **'Turn AirPort On'**.



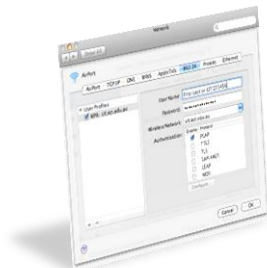
Configuring WPA2 Authentication (Step not required for OSX Lion)

Select **'cit.act.edu.au'** from the **'Network Name:'** dropdown list.

Go to the **'Apple'** menu and select **'Canberra Institute of Technology'** from the **'Location'** dropdown list, if not already selected.

Select **'Airport'** from the dropdown list or choose **'AirPort'** item from the device list, if not already selected.

Click on the **'Advanced button...'** in the lower right of the **'Network'** screen.



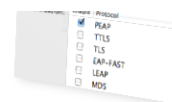
Select the **'802.1x'** tab.

Click on the **'+'** from the **'User Profiles'** window and select **'Add User Profile'** from the dropdown list.

Enter your username and password into the prompt, using your standard CIT Staff / Student ID (**First Last or CITnnnnnn** e.g. CIT123456).

Select **'cit.act.edu.au'** from the **'Wireless Network:'** dropdown list.

Ensure that only **'PEAP'** is checked in the **'Authentication:'** window in the lower right corner.



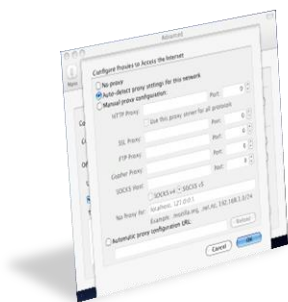
You may receive a dialogue box asking you to **'Verify Certificate'**, when you connect. Click on the continue button.

Configuring the Browser

Configuring automatic proxy aware browsers

Open your preferred browser.

Click on the browser name in the **'Menu Bar'** and select **'Preferences...'** from the dropdown list.
Select the **'Advanced'** icon (or look for an option something like Network settings).
Click the **'Settings'** button next to **'Configure how "your browser" connects to the Internet'** option.



Select the **'Auto-detect proxy settings for this network'** option or the option that matches this option from with your browsers

Browsers known to work with this configuration



Configuring non-automatic proxy aware browsers

Open your preferred browser.

Click on the browser name in the **'Menu Bar'** and select **'Preferences...'** from the dropdown list.
Select the **'Advanced'** icon (or look for an option something like Network settings).
Click the **'Change Settings'** button next to **'Proxies:'** option.



Select the dropdown from the **'Configure Proxies:'** option and select the **'Using a PAC file'** option.
In the **'PAC File URL:'** field type **'http://wpad/wpad.dat'** and then click on the **'OK'** button.
Click on the **'Apply'** button.

Browsers known to work with this configuration

