

CIT Wireless Network Configuration Guide

Table of Contents

Introduction	1
General Wireless Settings	1
1. Windows XP – Wireless Configuration.....	2
2. Windows XP – Intel Pro Wireless Tool	7
3. Windows Vista – Using the Windows Wireless Tools	10
4. Windows 7 – Using the Windows Wireless Tools	12

Introduction

Accessing the CIT wireless network has been tested on several different Microsoft Windows versions. This guide provides general settings for connecting to the CIT Wireless network and a step by guide to connect to the CIT wireless network using Windows XP, Vista, or Windows 7 using Windows native wireless tools. For users using non-native windows wireless tools please consult your user manual.

General Wireless Settings

Please use these settings as a guide to configure your wireless connection tool if you are not using native windows wireless tools:

- Security/Encryption: WPA2 Enterprise
- Authentication: Protected EAP (PEAP)
- CA Certificate: [no certificate is currently required]
- PEAP Version: Version 1 (or automatic)
- Inner Authentication: MSCHAPv2
- IP addressing: Automatic (DHCP)

General Steps for Setting up Wireless in Windows

1. Make sure that the Wireless Network Card is enabled and your laptop can see wireless networks. (Please consult your user manual for assistance.)
2. Open the **Wireless Network Connection** page and refresh the network list
3. **Connect** to cit.act.edu.au
4. Enter your CIT user name and password

NOTE: You may receive a dialogue box asking you to ‘Verify Certificate’ when you connect. Click on the continue button.

1. Windows XP – Wireless Configuration

System Requirements:

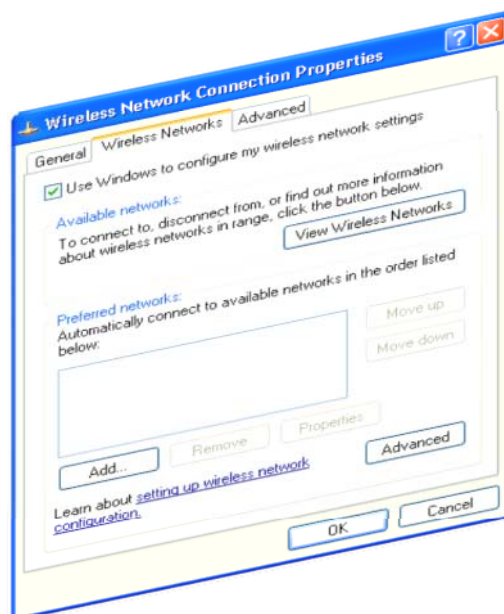
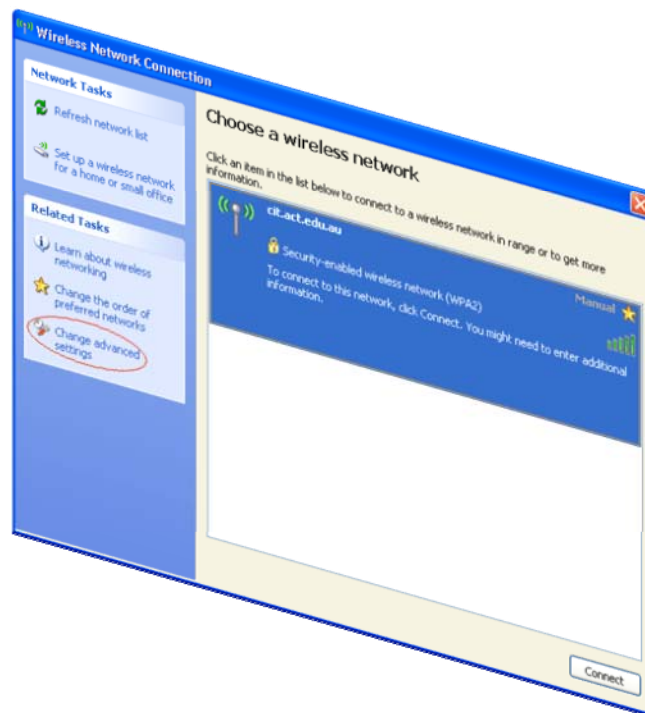
- Windows XP SP3
- Internet Explorer 7 or higher

1.1 Configuring WPA2 Authentication

In the bottom right corner of the screen left click on the **wireless icon**



In the Wireless Network Connection Windows Click on the **Change Advanced Settings** link:



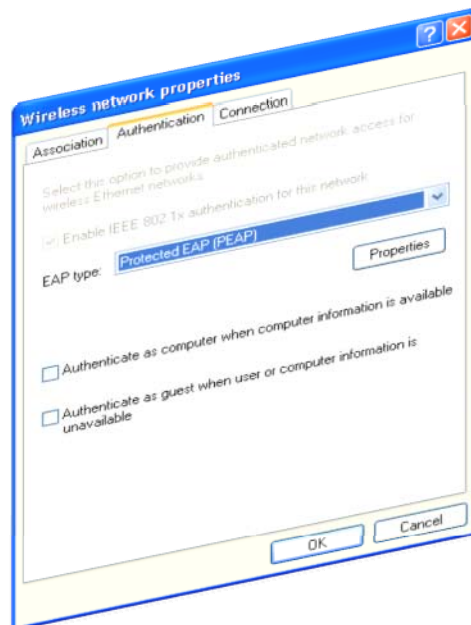
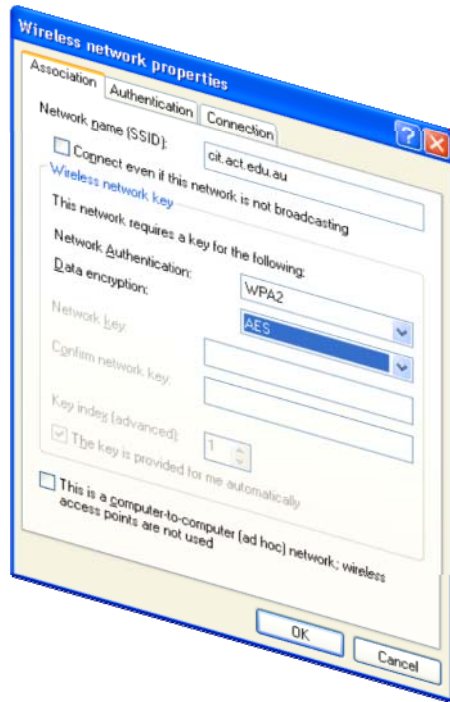
Select the **Wireless Networks** Tab and Click the **Add** Button

Add the following text to the **Network Name (SSID): cit.act.edu.au**

Ensure that the **Connect even if this network is not broadcasting** is not checked.

Change **Network Authentication** to: **WPA2**

Change **Data Encryption** to: **AES**



Click on the **Authentication** Tab

Select the **EAP Type** to **Protected EAP (PEAP)**

Uncheck the **Authenticate as computer when the computer information is available** box

Click the **Properties** Button below the **EAP Type**

Uncheck the **Validate Server Certificate** box.

Click the **Configure** button



Uncheck the **automatically use my Windows logon name and password (and domain if any)** box.

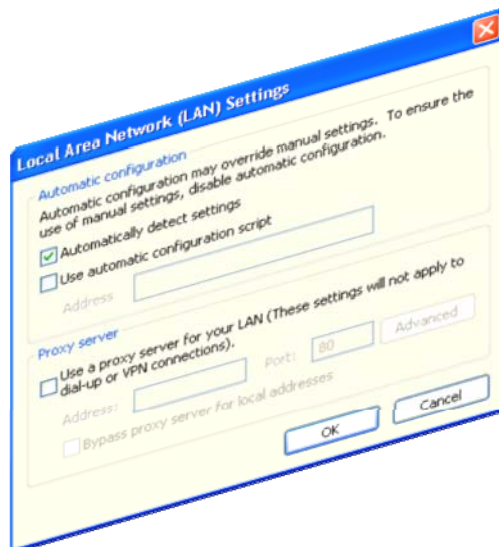
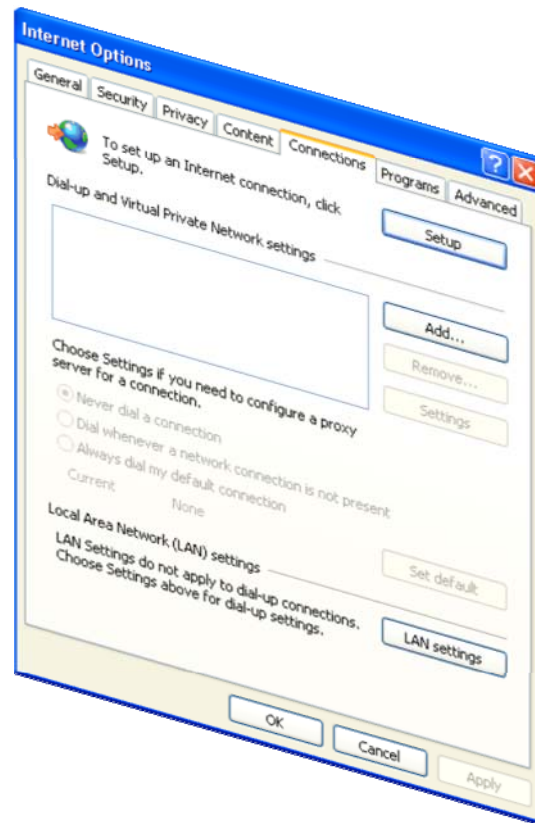
Click **OK** until all windows are closed.

1.2 Configuring the Browser

Open Internet Explorer
Click on **Tools** and **Options**

Click the **Connections** tab

Click the **LAN Settings** button



Check the **Automatically Detect Settings** box

Click Ok.

Close and reopen Internet Explorer.

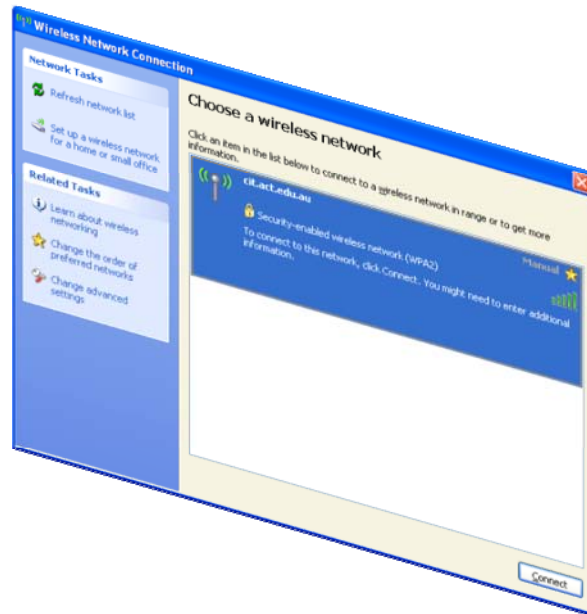
You should see you home page.

1.3 Connecting to the Wireless Network

In the bottom right corner of the screen left click on the **wireless icon**



In the **Wireless Network Connection** Window click **Connect**



Enter your username and password into the prompt, using your standard CIT Staff / Student ID (**First Last or CITnnnnnn** e.g. CIT123456) and click ok.

Leave the **Domain** field blank

2. Windows XP – Intel Pro Wireless Tool

2.1 Configuring WPA2 Authentication and Connection

System Requirements:

- Windows XP SP3
- Internet Explorer 7 or higher
- Intel Pro Wireless Tool installed on your laptop

In the bottom right corner of the screen double click on the **wireless icon** or click on **the Click to connect to a wireless network** link

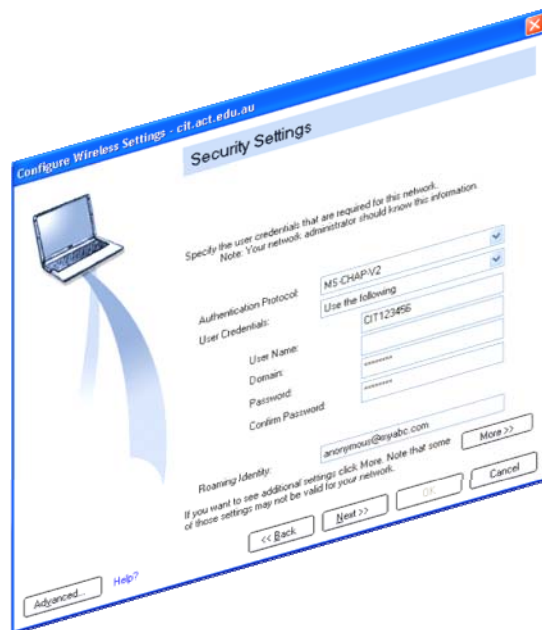


Highlight the **cit.act.edu.au** network and the click on the **Connect** button

Printed copies of this text are not controlled.
Always check the CIT Website to ensure this information is accurate.

Check to ensure that the **Wireless Network Name (SSID)** is **cit.act.edu.au**

Click **Next**



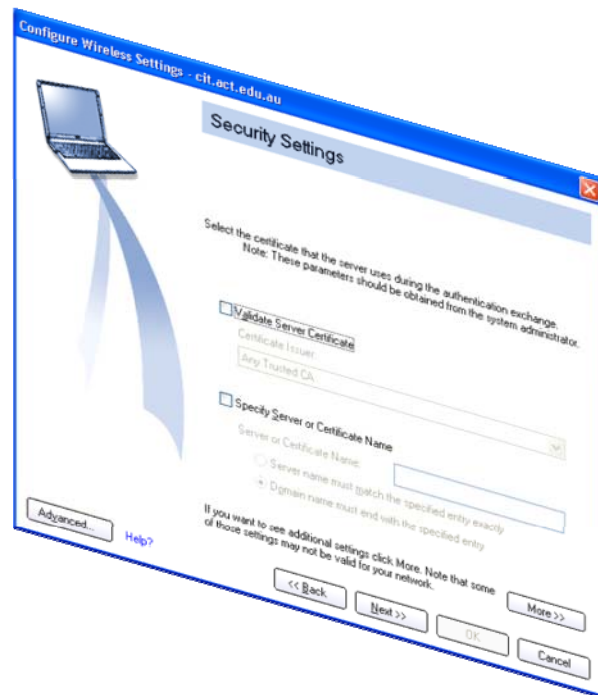
Enter your username and password into the prompt, using your standard CIT Staff / Student ID (**First Last or CITnnnnnn** e.g. CIT123456) and click ok.

Leave the **Domain** field blank

Click **Next**

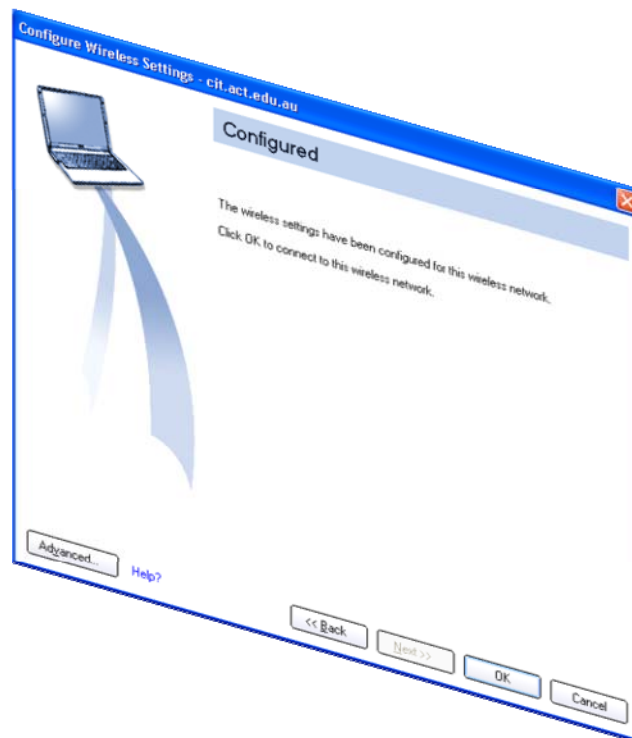
Uncheck the **Validate Server Certificate** box

Click **Next**



You are now configured to connect to the CIT Wireless network.

Click **OK** and the laptop will connect.



2.2 Configuring the Browser

Please refer to the steps outlined in section 1.2, **Windows XP – Using the Windows Wireless Tools, Configuring Your Browser.**

3. Windows Vista – Using the Windows Wireless Tools

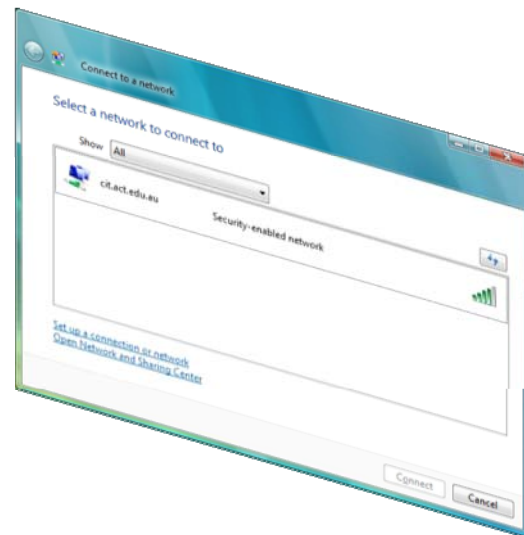
3.1 Connecting to the Wireless Network

In the bottom right corner of the screen left click on the **wireless icon**

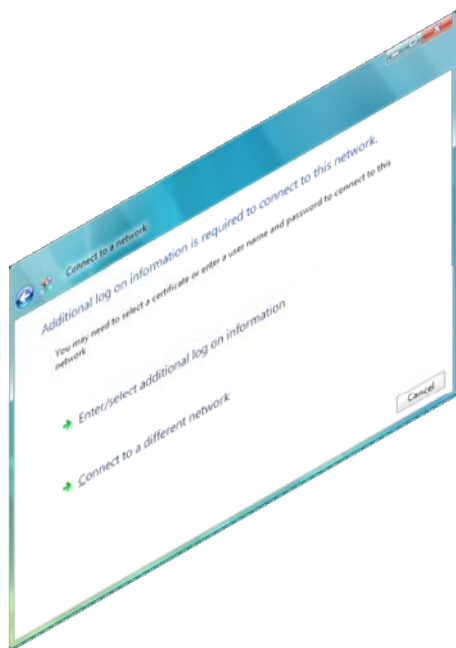


Click on the **Wireless networks are available** link

Select **cit.act.edu.au** from the list of wireless connections



Click on **Enter/select additional log on information**



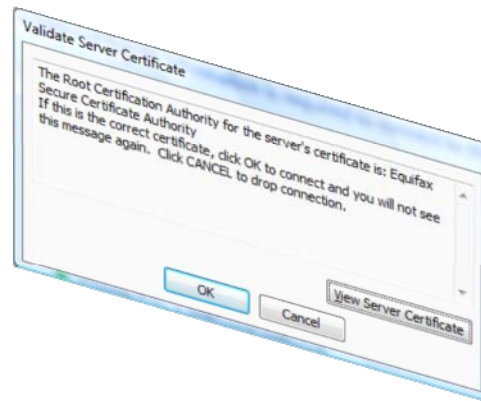


Enter your username and password into the prompt, using your standard CIT Staff / Student ID (**First Last or CITnnnnnn** e.g. CIT123456) and click ok.

Leave the **Domain** field blank

Click OK in the **Validate Server Certificate window**.

You should now be connected to the Wireless Network.



3.2 Configuring the Browser

No Browser configuration should be necessary as Windows Vista has its proxy settings set to automatically detect by default. If you do experience difficulty browsing through internet explorer please follow the steps in section 1.2, **Windows XP – Using the Windows Wireless Tools, Configuring Your Browser**.

4. Windows 7 – Using the Windows Wireless Tools

4.1 Connecting to the Wireless Network

Click on the Wireless button at the bottom right of the screen:



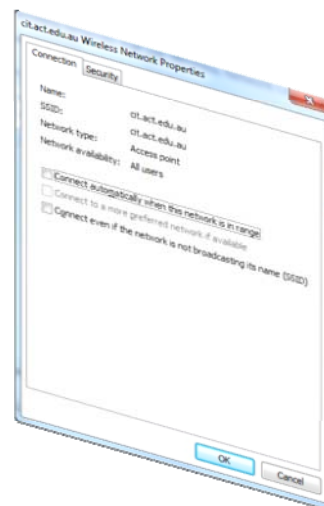
Select **Open Network and Sharing Center** the bottom of the screen

On the left hand side of the Network and Sharing Center select **Manage Wireless Networks**, select **Add**, then **Manually Create a Network Profile**

On the Connections Tab the network name should be **cit.act.edu.au**, for Security Type select **WPA2 – Enterprise**. Ensure that the **Start This connection automatically** checkbox is checked and uncheck the **Connect Even if the network is not responding**.

Click **Next**

Click **Change the Connection Settings** button





Select the **Security Tab**

Uncheck the **Remember my credentials for this connection each time I'm logged on**

Click the **Settings Button**

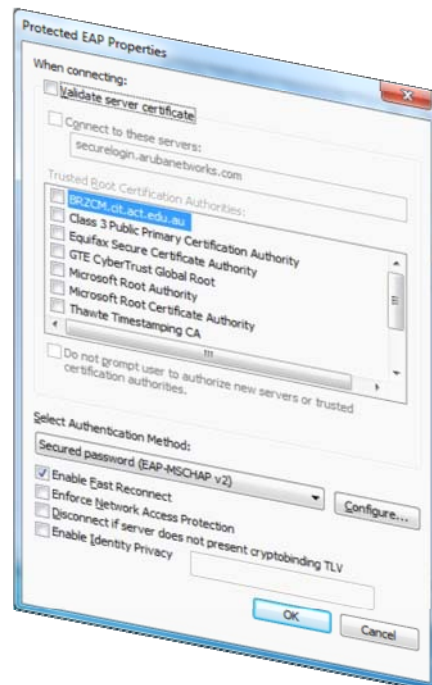
Uncheck the **Validate Server Certificate** checkbox

Ensure that the **Authentication Method** is set to **Secured Password (EAP-MSCHAP v2)**

Check the **Enable the Fast Reconnect** checkbox

Uncheck all other checkboxes

Click the **Configure** Button



Uncheck the **Automatically use my Windows logon name and password (and domain if any)** checkbox

Click **OK**

Click **OK**

Click the **Advanced Settings Button**



Ensure that the **Specify authentication mode checkbox** is checked.

Ensure that **User or computer authentication** is selected.

Click **OK**

Click **OK** again

Click **Close**



4.2 Configuring the Browser

No Browser configuration should be necessary as Windows 7 has its proxy settings set to automatically detect by default. If you do experience difficulty browsing through internet explorer please follow the steps in section 1.2, **Windows XP – Using the Windows Wireless Tools, Configuring Your Browser.**